

## Replacement Blades Model No. 943-039AH

### Instructions for replacing blades with blades of same spacing.



**CAUTION:** Failure to comply with these guidelines will cause severe damage to the Blades and Pusher Head.

**NOTE:** Before replacing Tomato Pusher or Blades, verify Carrier Plate Assembly is not loose. If carrier plate assembly is loose, then replace tomato slicer.

1. Grasp round, red handle of Tomato Saber Slicer and pull carrier assembly all the way back.

2. While holding the handle with one hand, firmly grasp the blade cartridge by the finger grip with other hand. Pull the blade cartridge all the way out. The blade clip will release the cartridge. See figure 1.

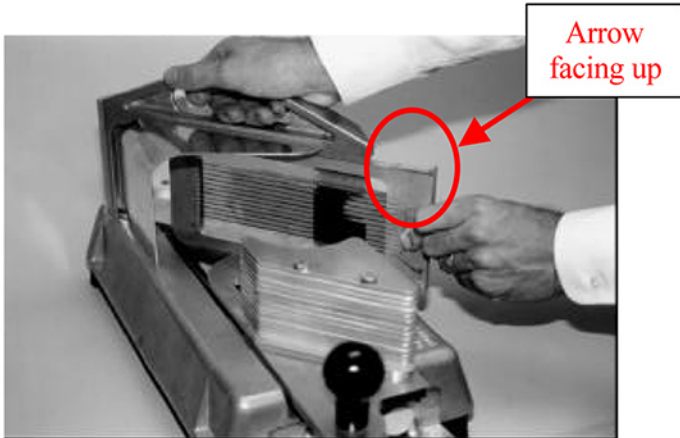


Figure 1

**CAUTION:** Do not remove blades when cleaning the Tomato Saber. Blades should only be re-moved when replacing due to the following reasons:

- Constant removal of blades may weaken the Blade Latch.
- Safety reasons, as the blades are extremely sharp.
- Handling removed blades can lead to damaged cutting surface.

3. Inspect pusher head for signs of damage to the aluminum plates. See figure 2.

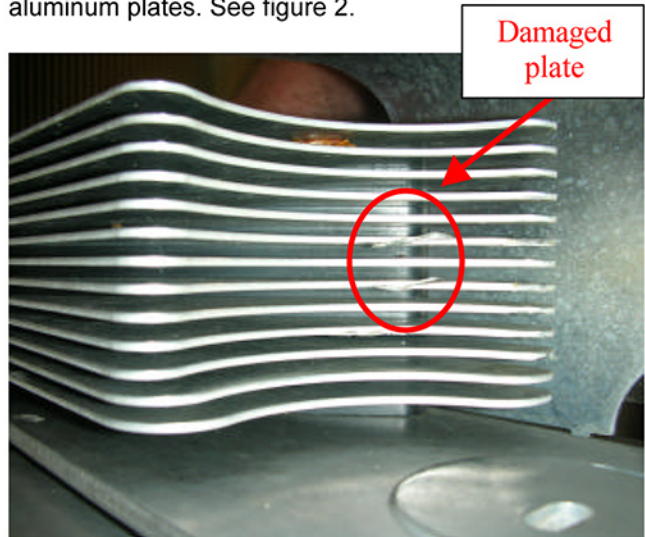


Figure 2

4. If any of the pusher head plates are nicked or damaged the pusher head assembly must be replaced.

**NOTE:** To replace pusher head assembly refer to appendix A.

5. Slide in the new blade cartridge with arrow facing up. See figure 1.

6. Firmly push the blade cartridge into place until it snaps into the blade clip. See figure 1

7. Properly discard the old blade cartridge using the packaging from the new blade cartridge.

8. Slide the Pusher Head halfway through the blades.

9. Looking at the blades from eye level, verify that each Blade is in the center of the Pusher Head Plates.

10. If one or more of the blades are not aligned properly (See figure 3), follow the instructions below.

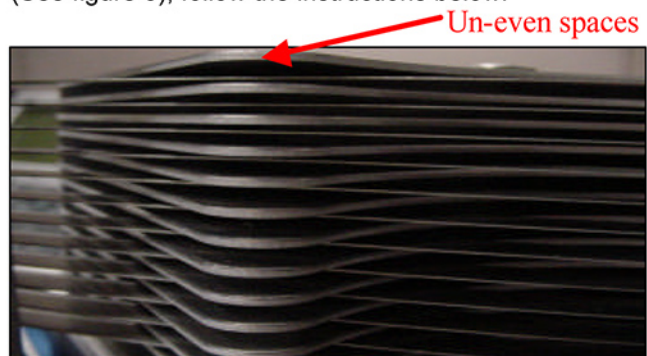


Figure 3



11. Using a flat-head screwdriver, bend the Pusher Head Plate either up or down, depending on the location of the blade (See figure 4).

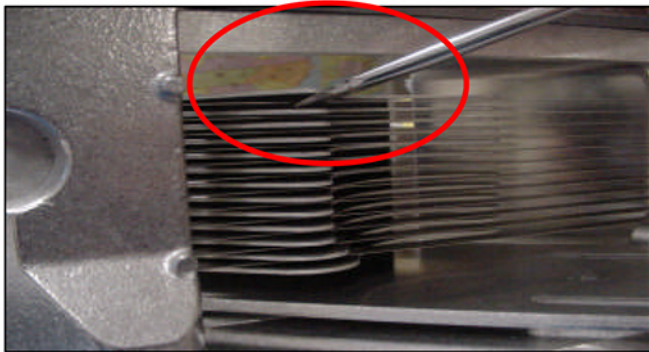


Figure 4

12. Repeat step 9, for all Pusher Head adjustments.

**NOTE:** It is only necessary to bend the front of the Pusher Head Plate.

13. Once the blade clears the front of the Pusher Head Plate, the plate will glide through evenly the rest of the way.

this spacer is located on the screws prior to installation.

**NOTE:** Do not attempt to install the new Pusher Head without the bottom spacer in place.

4. Attach new Tomato Pusher to the carrier assembly using the screws provided. Alternately tighten both screws finger-tight. Apply final torque to the screws using a wrench.

Once complete move on to step 5 of instructions.

## Appendix A

1. Remove screws (A) from existing Tomato Pusher (B) and set aside. Discard old Tomato Pusher.

See figure 5

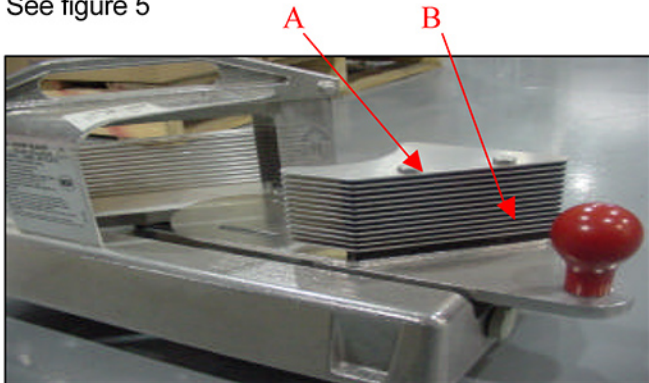


Figure 5

2. Before installing the new Pusher Head, remove the nuts from the screws holding the Pusher Head assembly together.

3. The bottom spacer on the new Pusher Head is much thicker than the other spacers. Ensure that