

Operating Instructions



Vertical Contact Toaster 297 Series



Electrical Specifications

Volts	Hz	Watts	Amps
220-240	50/60	1700-1890	8A

Table of Contents

Safety Information	2
Installation	2
Operation	3
Adjustments	4
Cleaning	5
Troubleshooting	6
Parts List Wiring diagram	7

Limited Warranty

This product is warranted to be free from defects in material and/or workmanship for a period of 1 year from date of original installation, not to exceed 18 months from the date of manufacture.

Any component which proves to be faulty in material and/or workmanship will be replaced or repaired (at the option of Prince Castle, Inc.) without cost to the customer for parts and labor. This warranty covers on location service (i.e. trip charges and/or mileage). Travel mileage is limited to 100 miles (200 Kilometers) round trip (one trip warranty) from an authorized service agency or its sub-service agency.

This warranty is subject to the following exceptions/conditions:

- Use of any non-genuine Prince Castle parts voids this warranty.
- All labor to be performed during regular work hours. Overtime premium (the incremental amount) will be charged to the customer.
- Damage caused by carelessness, neglect and/or abuse (e.g., dropping, tampering or altering parts, equipment damaged in shipment, by fire, flood or an act of God) is not covered under this warranty.
- All problems due to operation at voltages other than that specified on equipment nameplates are not covered by this warranty. Conversion to correct voltage is the customer's responsibility.
- This equipment must be serviced by Prince Castle Authorized Service Agency or a Prince Castle Service Technician during the warranty period.
- Normal adjustments as outlined in this manual are not covered under warranty.



No 12, Xin tai road, Teda, Tianjin, China

Phone: (86 21) 400-1040-990

WWW.PRINCECASTLE.COM

Safety Information



WARNING

Indicates information important to the proper operation of the unit. Failure to observe may result in damage to the equipment and/or severe bodily injury or death.



CAUTION

Indicates information important to the operation of the unit. Failure to observe may result in damage to the equipment.

-- This warning is not for EUROPEAN market:

This appliance is not intended for use by persons (including children with reduced physical, sensory or mental capabilities, or lack of experience and knowledge, unless they have been given supervision or instruction concerning use of the appliance by a person responsible for their safety. Children should be supervised to ensure that they do not play with the appliance.

--This warning is only for EUROPEAN market only:

This appliance can be used by children aged from 8 years and above and persons with reduced physical, sensory or mental capabilities or lack of experience and knowledge if they have been given supervision or instruction concerning use of the appliance in a safe way and understand the hazards involved. Children shall not play with the appliance. Cleaning and user maintenance shall not be made by children without supervision.

-- If the supply cord is damaged, it must be replaced by the manufacturer, its service agent or similarly qualified persons in order to avoid a hazard.

CAUTION



This manual is not adapt for physical or mentally defective person, also lack of knowledge and experience, (Including children).

--Instructions state that such on appliance shall not be cleaned with a water jet

--Recommendations regarding the rating and installation of protective devices for appliances which are permanently connected to a fixed wiring and for which leakage currents may exceed 10 mA

--The instructions shall include a warning that the appliance shall be disconnected from its power source during service and when replacing parts and, if that the removal of the plug is foreseen, it shall be clearly indicated that the removal of the plug has to be such that an operator can check from any of the points to which he has access that the plug remains removed.

For machine without a plug, users need to install with multistage open circuit protection device yourself .

The machine net weight is 30-35Kg

Installation

1. After you have removed the toaster from the carton, inspect the unit for signs of damage. If there is damage to the unit:
 - Notify carrier within 24 hours after delivery.
 - Save carton and packing material for inspection purposes.
 - Contact your Prince Castle dealer or the Prince Castle Customer Sales Department at 4006-930-990 if purchased directly.
2. Verify that all parts have been received.
 - Slim-Line Bun Toaster and conveyor assembly.
 - Crumb wireMore optional parts
 - Energy saving air flapper
 - Heat shield
3. Place toaster on flat surface. Remove protective covering.
4. Lift conveyor off conveyor guide rails and set aside. Remove all packing materials (nylon tape, foam block, plastic coating on sheet metal, and white EPE at bottom) from conveyor and conveyor guides



Figure 1

5. Place the Teflon sheet over the top of the platen housing, make sure to have at least 50mm overhang.



Figure 2

- Slide the release sheet holding bracket onto the top of the platen housing.



Figure 3

- Attach conveyor to the toaster by sliding the four pins (conveyor slides) on the conveyor housing into the four conveyor guides. Lower the conveyor housing until it is securely in place.

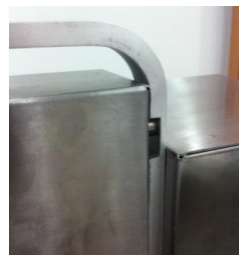


Figure 4

- Hook the back end of the crumb wire onto the bar located below the conveyor assembly.



Figure 5

- Plug unit into a grounded receptacle.

Operation

- Turn the Power switch to the "On" position. The indicator light will turn on, wait till it turn off to reach operation temperature.

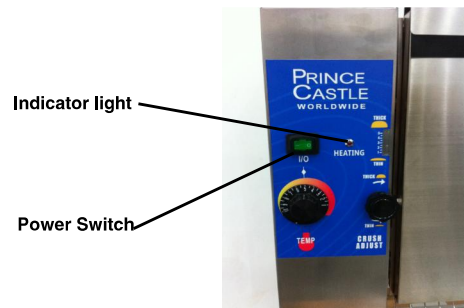


Figure 6

- Place a sample run of the product being toasted into the top of the conveyor housing. The side to be toasted should face the platen.



Figure 7

- The toasted product will be dispensed automatically from the bottom of the conveyor assembly.
- Verify that product meets acceptable standards. If not, see adjustment section.



Figure 8

Adjustments

Conveyor and Motor Gears:

There will be a 1/64" clearance between the conveyor gear and motor gear when properly aligned. Improper alignment will cause the conveyor to periodically bind.

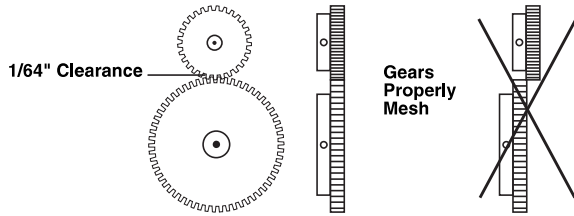


Figure 9

Tools Needed: Phillips Screwdriver
Wicking grade thread locking fluid

1. Working from the "back side" of the toaster, loosen the 2 setscrews at the bottom of the conveyor guide until they are even with the conveyor stop. Note: the conveyor assembly may need to be removed for easier access.
2. Use the Screwdriver to tighten the left setscrew (end housing side) until the setscrew just touches the conveyor slide.

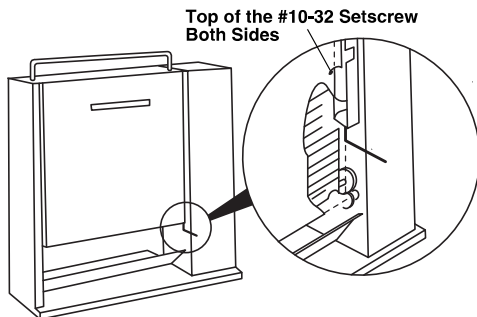


Figure 10

3. Tighten the right setscrew (motor housing side) until the bottom of the conveyor housing is parallel to the top of the base.
4. Carefully tighten each setscrew another 1 turn.
5. Remove the conveyor assembly.
6. Apply a drop of wicking grade thread locking fluid to each setscrew.
7. Replace conveyor assembly.

Bun Compression:

The toaster platen can be adjusted to provide the necessary compression needed on various products.

- Turn the two platen adjustment knobs clockwise to compensate for use on thicker bread products. Turn the two platen adjustment knobs counterclockwise for thinner products. The numbers on the front of the end and motor housing will indicate the settings, 1 for thinnest product, 5 for thickest.

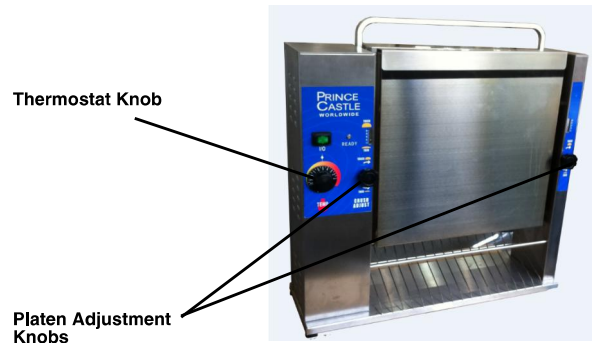


Figure 11

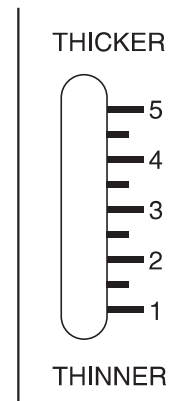


Figure 12

Platen Temperature:

The temperature of the platen can be adjusted to compensate for darker or lighter toasting requirements.

- Turn the thermostat adjustment knob clockwise for darker toasting. Turn the thermostat adjustment knob counterclockwise for lighter toasting.

IMPORTANT: Allow 15 minutes for toaster to stabilize after adjusting the thermostat.

Over Heat protection

To protect the machine from overheat, a high limit switch will shut the machine off when platen temperature over 350 centigrade. please check thermostat before reset.

To reset, Remove the red cap on the high limit switch then press the button.



Figure 13

Cleaning

CAUTION: This is not jet-water approved, and should not be cleaned with a water hose or jet spray.

CAUTION: Do not immerse in water.

1. Turn off the Power switch and unplug the toaster.
2. Allow platen to cool for 60 minutes before cleaning.
3. Remove the conveyor assembly.
4. Wipe the conveyor with a damp cloth. For the chain use a soft bristle brush if needed.
5. Remove the release sheet and lay it on a flat surface. Thoroughly clean both sides with a damp cloth making sure all carbon buildup is removed. Allow to air dry.

IMPORTANT: Rotate side of teflon sheet for longer life. Sheets last 3 – 6 months based on care and volume of product toasted.

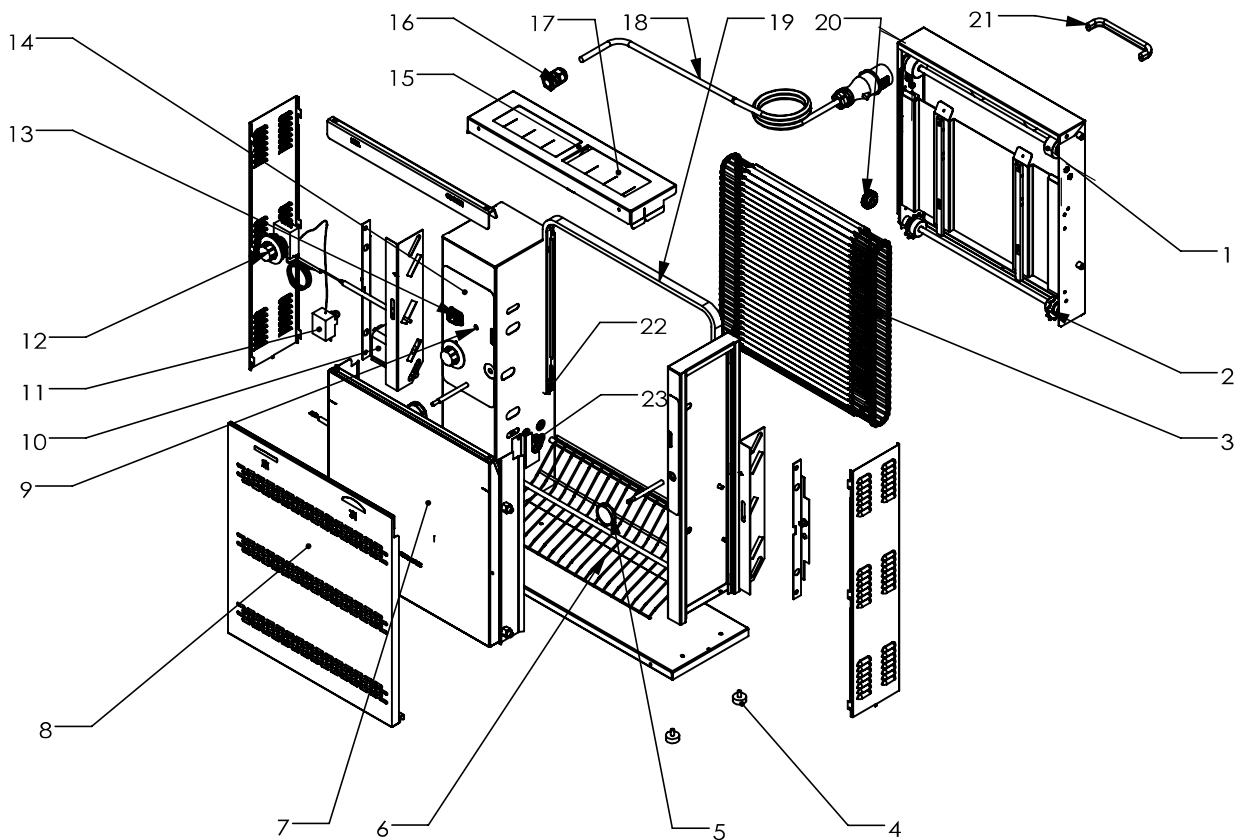
6. Use a damp cloth to remove any carbon buildup on the platen surface.

IMPORTANT: Do not use sharp objects, Scotch Brite pads, scouring pads, or abrasive cleaners on the platen or Teflon release sheets as it will cause irreparable damage.

Troubleshooting

PROBLEM	PROBABLE CAUSE	SOLUTION
Unit will not heat up. Power rocker switch light off.	No power to unit. Inoperable power cord. Loose connection on power switch. Inoperable power switch.	Ensure power cord is connected to proper receptacle and the power inlet. Replace power cord. Tighten power switch connections. Replace power switch.
Unit will not heat up. Power rocker switch light on.	Inoperable thermostat. Inoperable platen.	Replace thermostat. Replace platen.
Unit heats up, but the conveyor does not run.	Loose motor switch connection. Inoperable motor. Stripped drive gear. Loose chain sprockets. Gears not meshing. Inoperable motor switch.	Tighten motor switch connection. Replace motor. Replace drive gear. Adjust and tighten sprockets. Adjust conveyor setscrews. (See Conveyor and Motor Gears on page 3). Replace switch.
Unit under- and over-heats (does not respond to thermostat adjustments).	Inoperable thermostat.	Replace thermostat.
Buns under or over done.	Check platen adjustment. (See Bun Compression on page 3.) Check platen temperature. (See Platen Temperature on page 3.)	Adjust platen for proper compression. Adjust thermostat for proper temperature.

Explosive View



297-W16 PART LIST

ITEM	PN	DES	ITEM	PN	DES
1	197-282S	ROLLER	14	197-484S	OVERLAY
2	197-452S	SPROCKET	15	297-011S	AIR FLAPPER GUARD
3	197-469S	WIRE BELT	16	66-045S	STRAIN RELIEF
4	197-232S	FOOT	17	297-014S	FLAPPER TEFLON SHEET 2pcs
5	197-091S	KNOB,BLACK	18	72-423S	POWERCORD
6	297-339S	WIRE RAMP	19	297-124S	CONVEYOR GUIDE
7	197-433S	HEATING PLATEN	20	197-436SC	GEAR 24 TEETH
8	297-021S	297 HEAT SHIELD (EN)	21	297-007S	HANDLE
9	297-306S	INDICATOR	22	297-16S	CONVEYOR STOP
10	297-032S	MOTOR	23	297-026S	GEAR 48 TEETH
11	537-476SC	OVER HEAT PROTECTOR	24	197-257S	RELEASE SHEET
12	297-147S	THERMOSTAT	25	297-302S	WIRE HARNESS
13	78-233S	SWITCH			

NOTE: ITEM 24,25 NOT SHOWN

MINI 297 PART LIST

297-SE16, 297-SW16,297-SW12,297-SE12,297-SW12SA
297-SW9,297-SW9KFCEU,297-SW9KFCEN

ITEM	PN	DES	ITEM	PN	DES
1	197-283S	ROLLER	17	297-015S	FLAPPER TEFLON SHEET 2pcs
2	197-452S	SPROCKET	18	72-423S	POWER CORD (SE16,SW16,SE12,SW12,SW9)
3	527-420S	METAL BELT (SE16,SE12)		72-4232S	POWERCORD(SW12SA)
	297-470S	WIRE BELT (SW16,SW12,SW12SA)		72-4231S	POWER CORD (SW9KFCEU)
4	197-232S	FOOT		297-001S	POWER CORD (SW9KFCEN)
5	197-091S	KNOB,BLACK	19	297-125S	CONVEYOR GUIDE
6	297-340S	WIRE RAMP	20	197-436SC	GEAR 24 TEETH(SW16,SE16)
7	197-434S	HEATING PLATEN		297-341S	GEAR 18 TEETH(SW12,SE12,SW12SA)
8	297-202S	297 HEAT SHIELD (EN)		297-C201S	GEAR 27 TEETH(SW9,SW9KFCEU/EN)
9	297-306S	INDICATOR	21	297-007S	HANDLE
10	87-028A	MOTOR	22	297-16S	CONVEYOR STOP
	87-032	MOTOR(SW9,SW9KFCEU/EN)	23	297-026S	GEAR 48 TEETH
	86-240	Fan Blade	24	197-258S	RELEASE SHEET
11	537-476SC	OVER HEAT PROTECTOR	25	297-302S	WIRE HARNESS
12	297-147S	THERMOSTAT			
13	78-233S	SWITCH			
14	197-485S	OVERLAY			
15	297-101S	AIR FLAPPER GUARD			
16	66-045S	STRAIN RELIEF			

NOTE: ITEM 24,25 NOT SHOWN

Wiring Diagram

