

# Operation Manual

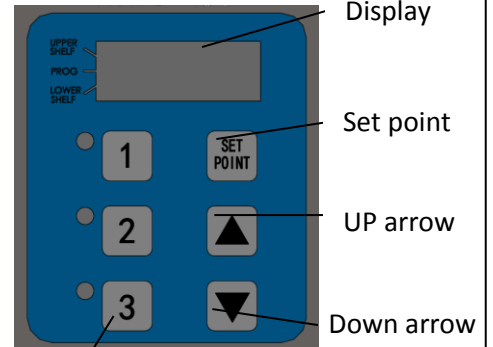
## Holding Bin DHB2PT-GMCN & DHB3PT-GMCN



DHB3PT-GMCN



DHB2PT-GMCN



Button 1、2、3

Display  
Set point  
UP arrow  
Down arrow

### LIMITED WARRANTY

This product is warranted to be free from defects in material and/or workmanship for a period of 1 year from date of original installation, not to exceed 18 months from the date of manufacture.

Any component which proves to be faulty in material and/or workmanship will be replaced or repaired (at the option of Prince Castle, Inc.) without cost to the customer for parts and labor. This warranty covers on location service (i.e. trip charges and or mileage). Travel mileage is limited to 100 miles (200 Kilometers) round trip (one trip warranty) from an authorized service agency or its sub-service agency.

This warranty is subject to the following exceptions/conditions:

- Use of any non-genuine Prince Castle parts voids this warranty.
- All labor to be performed during regular work hours. Overtime premium (the incremental amount) will be charged to the customer.
- Damage caused by carelessness, neglect and/or abuse (e.g., dropping, tampering or altering parts, equipment damaged in shipment, by fire, flood or an act of God) is not covered under this warranty.
- All problems due to operation at voltages other than that specified on equipment nameplates are not covered by this warranty. Conversion to correct voltage is the customer's responsibility.
- This equipment must be serviced by Prince Castle Authorized Service Agency or a Prince Castle Service Technician during the warranty period.

**Note:** 520-120 wire frame and 520-202 tray is consumable, not covered under this warranty.

### TABLE OF CONTENTS

Safety Information.....	2
Electrical Specification.....	2
Product Identification.....	2
Installation.....	3
Operation.....	3
Cleaning.....	4
Setting the Temperature.....	4
Calibrating Heater.....	5
Trouble Shooting.....	6
Wiring Diagram.....	6
Exploded View and Parts List.....	7



Building 5, No. 889 Kungang Road.,XiaoKunShan Town, Songjiang District, Shanghai, China, Zip Code 201614

Tel: +86-021-6040-1705 www.princecastle.com

**Safety Information**

**⚠️ WARNING**

Indicates information important to the proper operation of the unit. Failure to observe may result in damage to the equipment and/or severe bodily injury or death.

**⚠️ CAUTION**

Indicates information important to the operation of the unit. Failure to observe may result in damage to the equipment.

**Electrical Specification**

Model No.	Volts	Watts	Hz
DHB2PT-GMCN	208-240	1145-1524	50
DHB3PT-GMCN	208-240	1717-2286	50

To prevent an electric shock hazard, this device must be bonded to equipment in close proximity with an equipotential bonding conductor. This device is equipped with a grounding lug for this purpose and is marked with the following symbol.



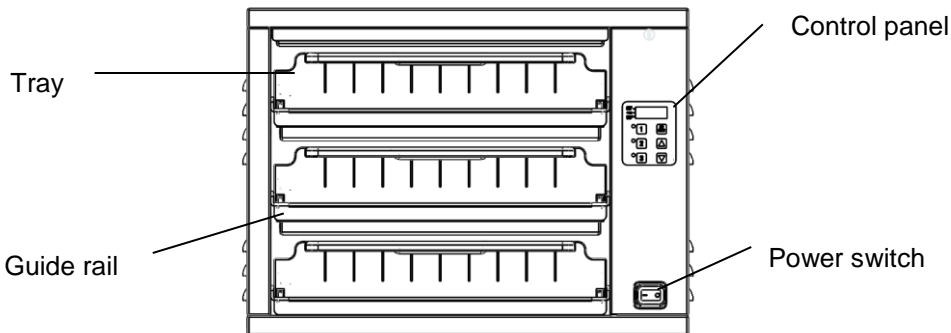
**⚠️ WARNING**

**This warning is not for EUROPEAN market:** This appliance is not intended for use by persons (including children) with reduced physical, sensory or mental capabilities, or lack of experience and knowledge, unless they have been given supervision or instruction concerning use of the appliance by a person responsible for their safety. Children should be supervised to ensure that they do not play with the appliance.

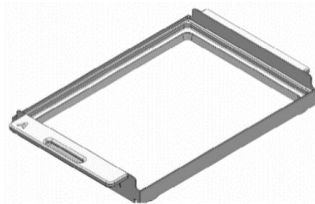
**This warning is only for EUROPEAN market only:** This appliance can be used by children aged from 8 years and above and persons with reduced physical, sensory or mental capabilities or lack of experience and knowledge if they have been given supervision or instruction concerning use of the appliance in a safe way and understand the hazards involved. Children shall not play with the appliance. Cleaning and user maintenance shall not be made by children without supervision.

If the supply cord is damaged, it must be replaced by the manufacturer, its service agent or similarly qualified persons in order to avoid a hazard.

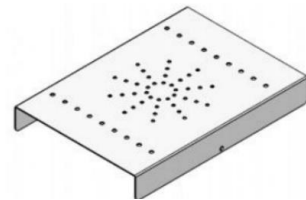
**Product Identification**



Guide rail (3pcs)



Tray(3 pcs, use with Al bakery pans)



Pan cover (3 pcs, use with full size plastic pans)

**Important**

Prince Castle reserves the right to change specifications and product design without notice. Such revisions do not entitle the buyer to corresponding changes, improvements, additions or replacements for previously purchased equipment.

## Installation

Remove the unit from the carton and inspect for signs of damage. If there is damage to the unit:

- notify the carrier within 24 hours of delivery
- save carton and packaging materials for inspection purposes
- contact your local dealer, or if purchased directly, the Prince Castle Sales Department at +86-21-6040-1705 to arrange for a replacement unit.

Verify that the following parts have been received.

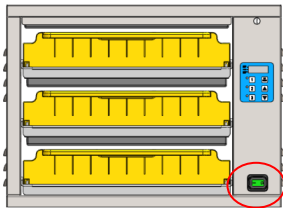
- Three Trays, three Guide rails and 2 aluminum pan covers.

*NOTE: When installing this unit, the ambient temperature at the mounting site should not exceed 100°F.*

Plug the power cord into the proper electrical receptacle. All electrical connections must be in accordance with local electrical codes and any other applicable codes.

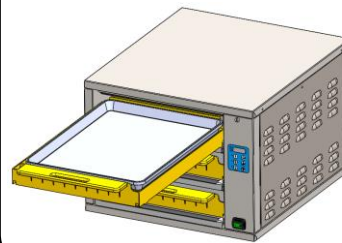
## Operation

1. Turn power ON/OFF switch to ON position.



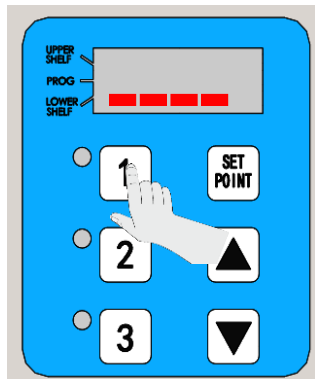
Allow 20 minutes for heaters to reach operating temperature. Control panel will display “\_ \_ \_ \_ \_” when unit is warmed up.

2. Place the cooked food in food pans (optional) and place the pans in the cabinet with intended accessories.

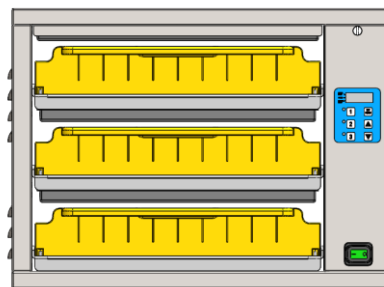


1/3 Plastic Pan	
1/1 GN Pan	
1/2 Aluminum Pan	

3. The three layers are separate control, if you want to close one of three layers, Press and hold the number button until the light is off.



4. Turn off the power switch when closing.



**Cleaning**

**WARNING**

Before performing any maintenance, turn the power switch to the OFF position and unplug the power cord from the electrical receptacle.

**CAUTION**

This unit is not watertight. Do not clean with a water jet/jet spray. Do not immerse the unit in water.

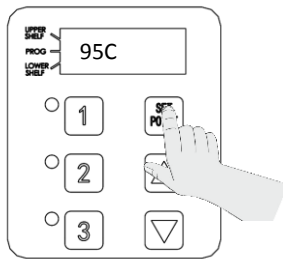
1. Turn the unit off and unplug the power cord from the electrical receptacle.
2. Remove the pan covers and pan racks. Wipe all parts and unit with a damp cloth. DO NOT use a green Scotch Bright pad cleaner, ice or water.



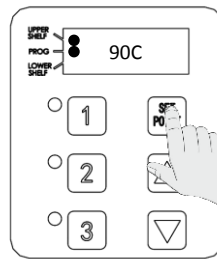
Hot surface!

**Setting the Temperature**

1. Press and hold the SET POINT button, until show the set temperature.



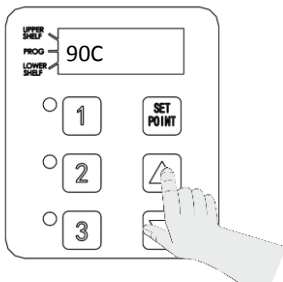
2. Press SET POINT button, select the heater which is you want to change.



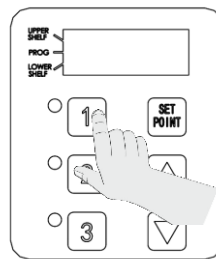
note:

- a. a point beside upper shelf light, show will change upper heater temperature.
- a point beside lower shelf light, show will change lower heater temperature.
- b. which one of number button flash show will change heater temperature of the layer.

3. Press upper arrow button or lower arrow button until show the temperature what you want.



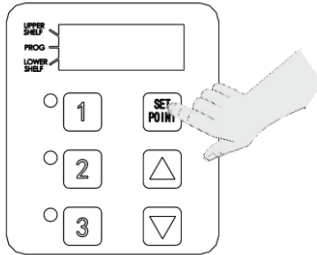
4. Press "1" button, save the changed.



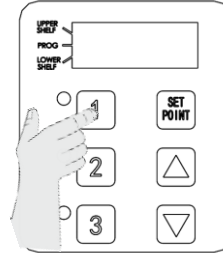
*NOTE: To reset all temperatures to the factory settings, turn the unit off, then press and hold the UP and DOWN Arrow buttons simultaneously while turning the unit on. All temperatures will be reset to original factory settings.*

## Setting the Temperature (continued)

5. If you want to adjust more the heaters temperature, you can press SET POINT button to select the next heater after set a heater temperature.



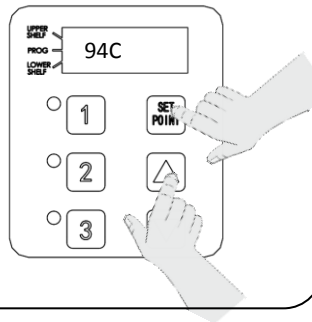
6. Press "1" button to save these settings and exit after completion.



## Calibration Heater

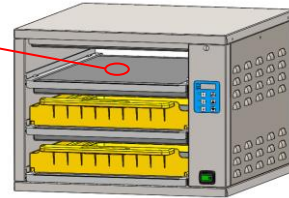
1. Press and hold Set Point and Up arrow button, display will show the actual temperature of the heater.

*NOTE: Allow sufficient amount of time for temperatures to stabilize before starting calibration. Press the UP or DOWN Arrow button until the desired shelf LED and upper(U) or lower (L) heater is selected.*



2. Take a temperature reading within the shelf near the center of the heater surface.

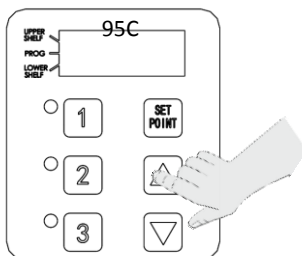
Heater Center  
 Use a stand-alone temperature meter(not supplied)



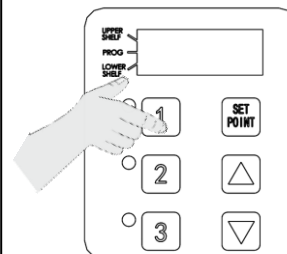
**Warning**

Hot surfaces. Use caution when taking temperature readings within the shelf.

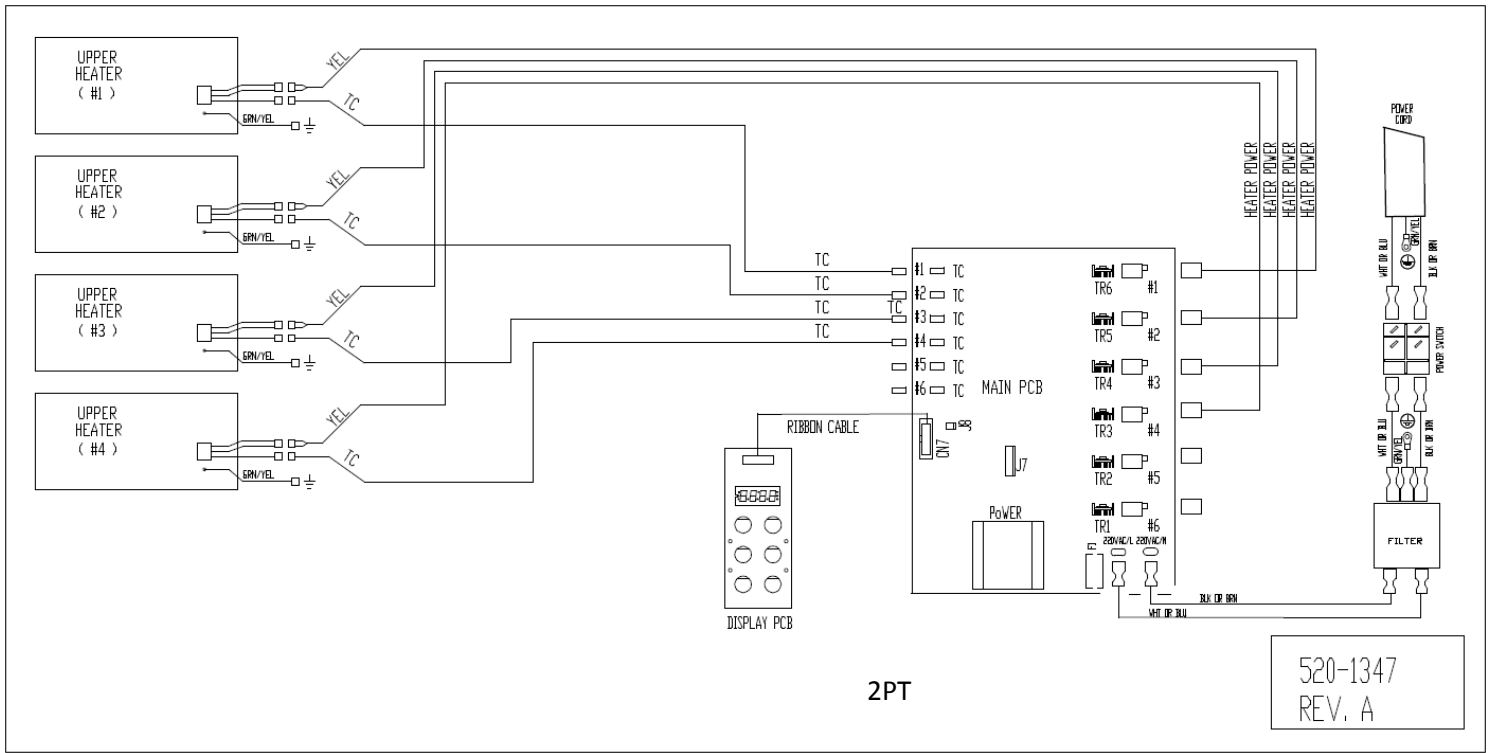
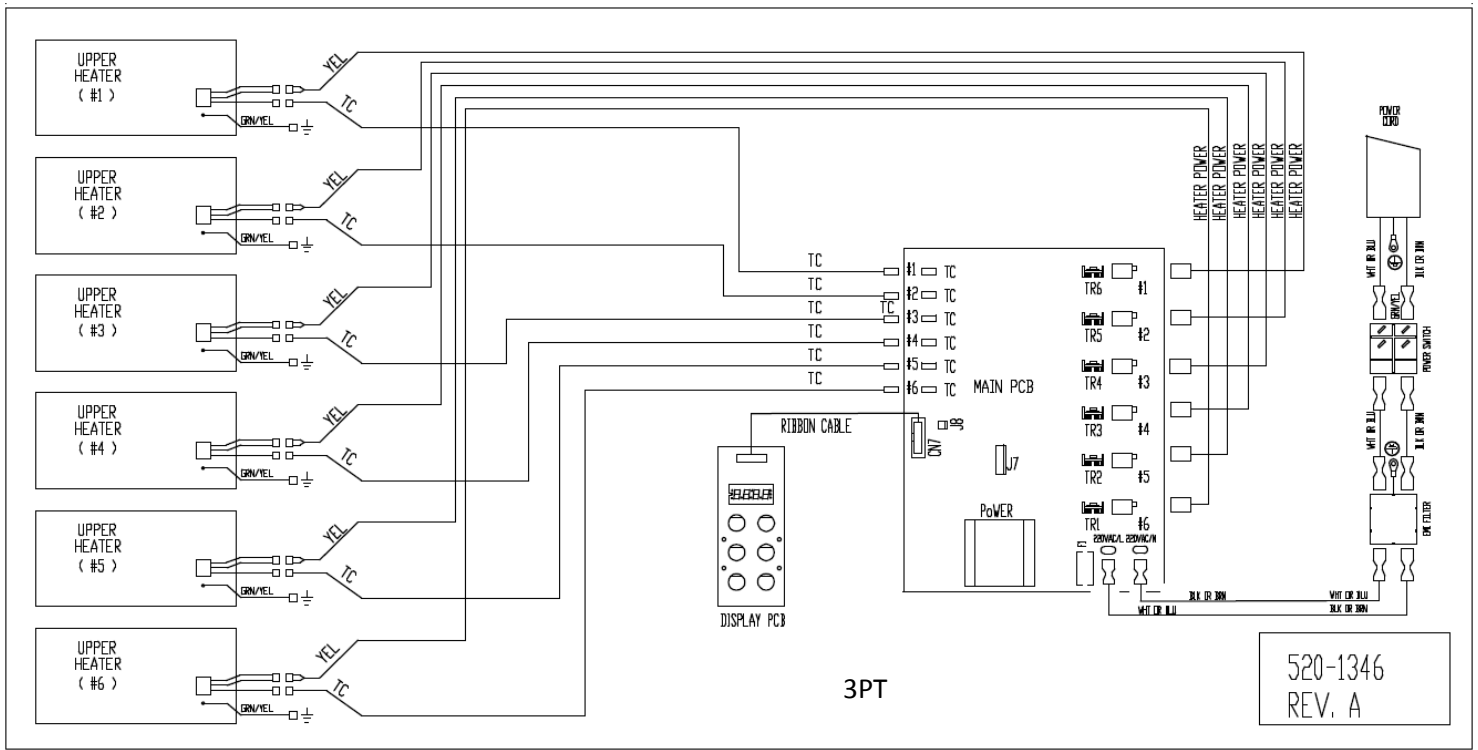
3. Press the UP or DOWN arrow button until the temperature displayed matches the reading obtained.



4. Press "1" button to save the temperature value and exit the Calibration mode.



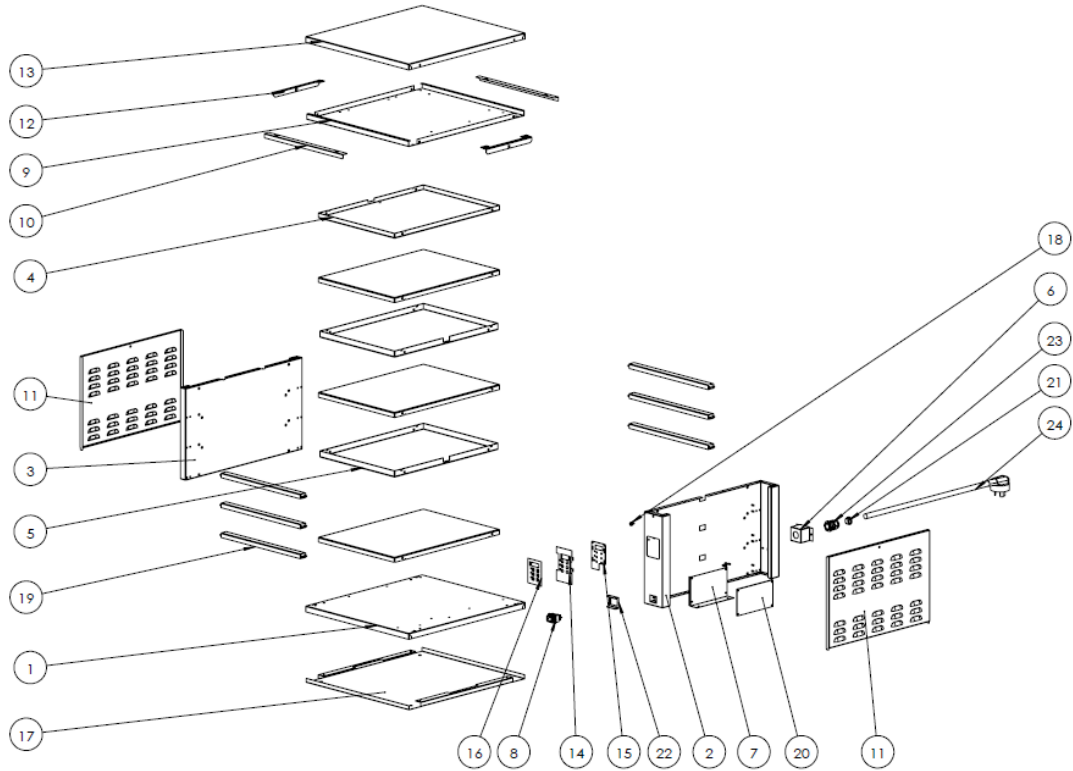
**Wiring Diagram**



**Trouble shooting**

<b>Problem</b>	<b>Problem Cause</b>	<b>Solution</b>
<b>No power</b>	<b>Not connect power cord</b>	<b>Insert power cord</b>
	<b>Power Switch Failure</b>	<b>Change power switch</b>
	<b>Main PCB Failure</b>	<b>Change main PCB</b>
	<b>Display board Failure</b>	<b>Change display board</b>
	<b>wiring error</b>	<b>Check wiring</b>
<b>Key operation invalid</b>	<b>Display board Failure</b>	<b>Change display board</b>
	<b>wiring error</b>	<b>Check wiring</b>
<b>Display shows HHH for an extended period of time and heater surface temperature is <u>hot</u></b>	<b>wiring error</b>	<b>Check wiring</b>
<b>Display shows LLL for an extended period of time and heater surface temperature is <u>cool</u></b>	<b>Heater Failure</b>	<b>Change heater</b>
	<b>Main PCB Failure</b>	<b>Change Main PCB</b>
	<b>Wiring error</b>	<b>Check wiring</b>
<b>Display shows “PRB”</b>	<b>Probe Failure</b>	<b>Change Heater <u>assy</u></b>
	<b>Main PCB Failure</b>	<b>Change Main PCB</b>

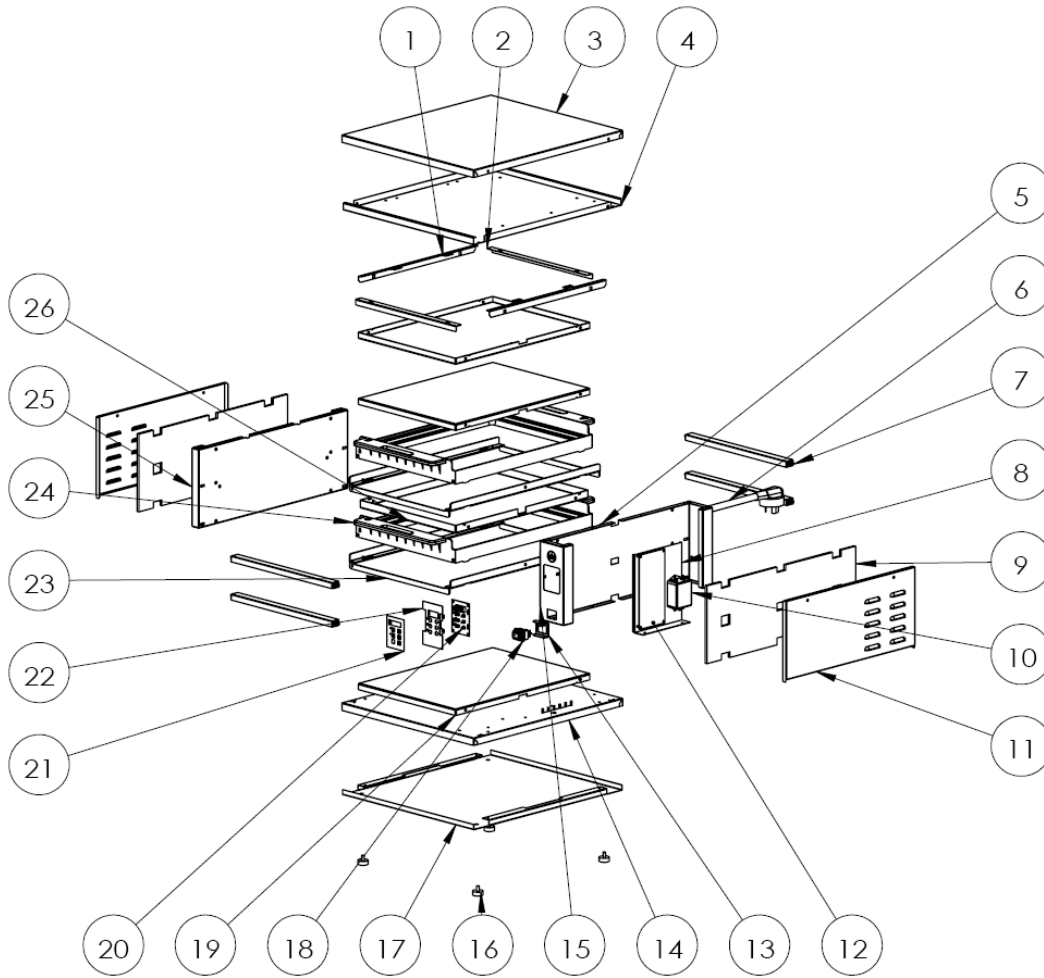
**DHB3PT-GMCN Exploded View and Parts List**



NO	PART NUMBER	DESCRIPTION	Qty	NO	PART NUMBER	DESCRIPTION	Qty
1	520-105	BASE	1	17	520-104	BASE FITTING PLATE	1
2	520-107	SUPPORT PLATE,RIGHT	1	18	547-067	SCREW	1
3	520-109	SUPPORT PLATE,LEFT	1	19	520-210	NYLON THERMAL BARRIER STRIP	6
4	520-116	ALUMINIUM PLATE(LARGE)	4	20	520-011	MAIN PCB	1
5	520-117	ALUMINIUM PLATE (SMALL)	2	21	99432	BUSHING	1
6	520-118	STRAIN RELIEF FIXED PLATE	1	22	542-164	GUARD SWITCH	1
7	520-110	MAIN PCB MOUNTING PLATE	1	23	66-045	STRAIN RELIEF	1
8	78-233	POWER SWITCH	1	24	PM-123A	POWER CORD	1
9	520-103	TOP SUPPORT PLATE	1	*	197-232	FEET	4
10	520-114	HEATER PLATE APRON	2	*	542-432H	ROPE HEATER	6
11	520-119	SIDE PLATE	2	*	520-211	PAPER CARD MOUNTING BOARD	1
12	520-115	SIDE PLATE MOUNTING PLATE	2	*	520-120	WIRE FRAME	3
13	520-102	TOP COVER	1	*	520-201	TRAY	3
14	520-111	DISPLAY BOARD MOUNTING PLATE	1				
15	520-010	DISPLAY BOARD	1		*	Not shown	
16	520-012	Overlay	1				



**DHB2PT-GMCN Exploded View and Parts List**



序号	零件号	说明	数量	序号	零件号	说明	数量
1	520-115	SIDE PLATE MOUNTING PLATE	2	15	521-002	SUPPORT PLATE, RIGHT	1
2	520-114	HEATER PLATE APRON	2	16	197-232	FEET	4
3	520-102	TOP COVER	1	17	520-104	BASE FITTING PLATE	1
4	520-103	TOP SUPPORT PLATE	1	18	78-233	POWER SWITCH	1
5	520-118	STRAIN RELIEF FIXED PLATE	1	19	520-116	ALUMINIUM PLATE (LARGE)	3
6	PM-123A	POWER CORD	1	20	520-010	DISPLAY BOARD	1
7	520-210	NYLON THERMAL BARRIER STRIP	4	21	520-013	OVERLAY	1
8	520-110	MAIN PCB MOUNTING PLATE	1	22	520-111	DISPLAY BOARD MOUNTING PLATE	1
9	520-219	INSULATION	2	23	520-120	RAIL BRACKETS	2
10	520-014	FILTER	1	24	520-201	TRAY	2
11	521-005	SIDE PLATE	2	25	521-004	SUPPORT PLATE, LEFT	1
12	520-011	MAIN PLATE	1	26	520-117	ALUMINIUM PLATE (SMALL)	1
13	542-164	GUARD SWITCH	1	27	66-045	STRAIN RELIEF	1
14	520-105	BASE	1	*	542-432H	ROPE HEATER	4