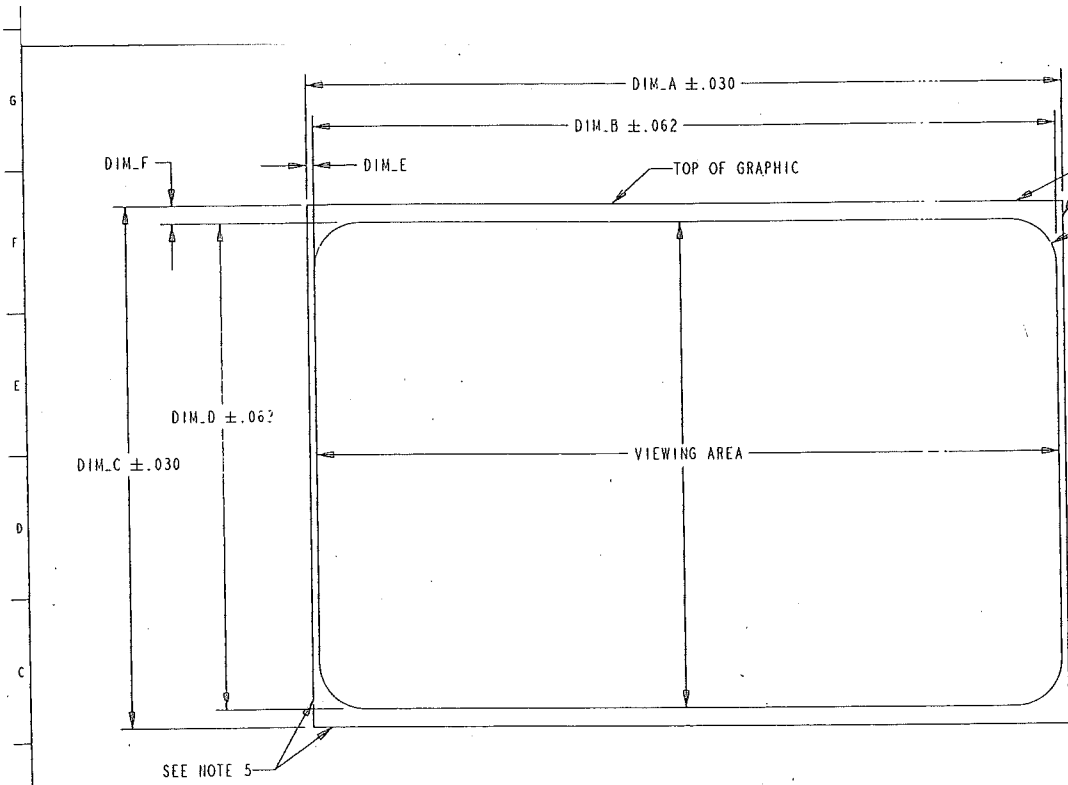


DIM.A	DIM.B	DIM.C	DIM.D	DIM.E	DIM.F	USED_ON
16.600	14.600	11.400	10.000	1.000	.700	ED150
24.794	22.794	11.083	10.000	1.000	.542	ED200
24.794	22.794	15.083	14.000	1.000	.542	ED250
36.985	36.985	11.062	10.000	1.000	.531	ED300
19.294	17.294	11.083	10.000	1.000	.542	ED175
60.125	59.125	11.750	10.750	.500	.500	2XX DUAL
16.750	14.750	6.250	5.000	1.000	.625	ED100



NOTES:

- 1) MATERIAL: .020 THICK CLEAR LEXAN OVERLAY REVERSE 4-COLOR SCREEN PRINT PROCESS, HARD WHITE COAT BACKING.
- 2) ARTWORK TO BE CENTERED WITHIN VIEWING AREA.
- 3) ARTWORK TO BE SUPPLIED BY PEPSI.
- 4) SAMPLE TO BE APPROVED BY CORNELIUS ENGINEERING BEFORE PRODUCTION.
- 5) BACKGROUND OF GRAPHIC TO EXTEND ALL THE WAY TO THE OUTSIDE EDGES.

IMPORTANT! THIS PART MUST MEET RoHS DIRECTIVE 2002/95/EC		TITLE GRAPHICS, (ED units)	
INSTANCE: 91973_GEH DIMENSIONS ARE IN INCHES, TOLERANCE UNLESS OTHERWISE SPECIFIED 1 PLACE: ±.004, I 2 PLACE: ±.000, 00 3 PLACE: ±.000, 015 DIAMETERS: ±.003 ANGLES: ±1.0 ASME Y14.5M 1994 STANDARD		MATERIAL DESCRIPTION DEPT. NO.	
IMI CORNELIUS INC. 500 REGENCY DRIVE GLENDALE HEIGHTS, ILLINOIS 60139		DO NOT SCALE DRAWING THIRD ANGLE PROJECTION	
INFORMATION PRESENTED IN THIS DRAWING IS THE PROPERTY OF IMI CORNELIUS INC. IS CONSIDERED PROPRIETARY; AND IS NOT TO BE REPRODUCED WITHOUT THE SPECIFIC WRITTEN PERMISSION OF IMI CORNELIUS REINFOR INC.		NOTED DEPT. NO. USED ON SCALE SEE B/M SEE CHART DWG. NO. DWG. NUMBER SHEET NO.	
DRAWN JK 05-Aug-99 CHECKED - APPROVED BY F. BRILL 8/9/99 AGENT APPROVAL	05-Aug-99 8/9/99	C 91973	0.500 91973 1 OF 1