

CARMA

250

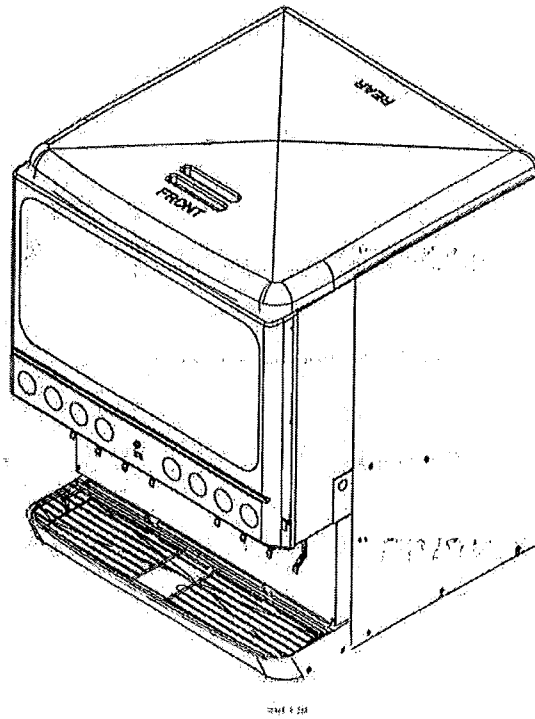
Subway



# ILLUSTRATED PARTS LIST

ENDURO - 200/250

ZARMA 250



USE  
NEW  
Image  
provided in  
620072560 IPL  
Drawing

Release Date: April 01, 2004

Publication Number: 92108IPL

Revision Date: September 20, 2016

Revision: M

A

620072560 IPL

Visit the Cornelius web site at [www.cornelius.com](http://www.cornelius.com) for all your Literature needs.

The products, technical information, and instructions contained in this manual are subject to change without notice. These instructions are not intended to cover all details or variations of the equipment, nor to provide for every possible contingency in the installation, operation or maintenance of this equipment. This manual assumes that the person(s) working on the equipment have been trained and are skilled in working with electrical, plumbing, pneumatic, and mechanical equipment. It is assumed that appropriate safety precautions are taken and that all local safety and construction requirements are being met, in addition to the information contained in this manual.

This Product is warranted only as provided in Cornelius' Commercial Warranty applicable to this Product and is subject to all of the restrictions and limitations contained in the Commercial Warranty.

Cornelius will not be responsible for any repair, replacement or other service required by or loss or damage resulting from any of the following occurrences, including but not limited to, (1) other than normal and proper use and normal service conditions with respect to the Product, (2) improper voltage, (3) inadequate wiring, (4) abuse, (5) accident, (6) alteration, (7) misuse, (8) neglect, (9) unauthorized repair or the failure to utilize suitably qualified and trained persons to perform service and/or repair of the Product, (10) improper cleaning, (11) failure to follow installation, operating, cleaning or maintenance instructions, (12) use of "non-authorized" parts (i.e., parts that are not 100% compatible with the Product) which use voids the entire warranty, (13) Product parts in contact with water or the product dispensed which are adversely impacted by changes in liquid scale or chemical composition.

### **Contact Information:**

To inquire about current revisions of this and other documentation or for assistance with any Cornelius product contact:

**www.cornelius.com**  
**800-238-3600**

### **Trademarks and Copyrights:**

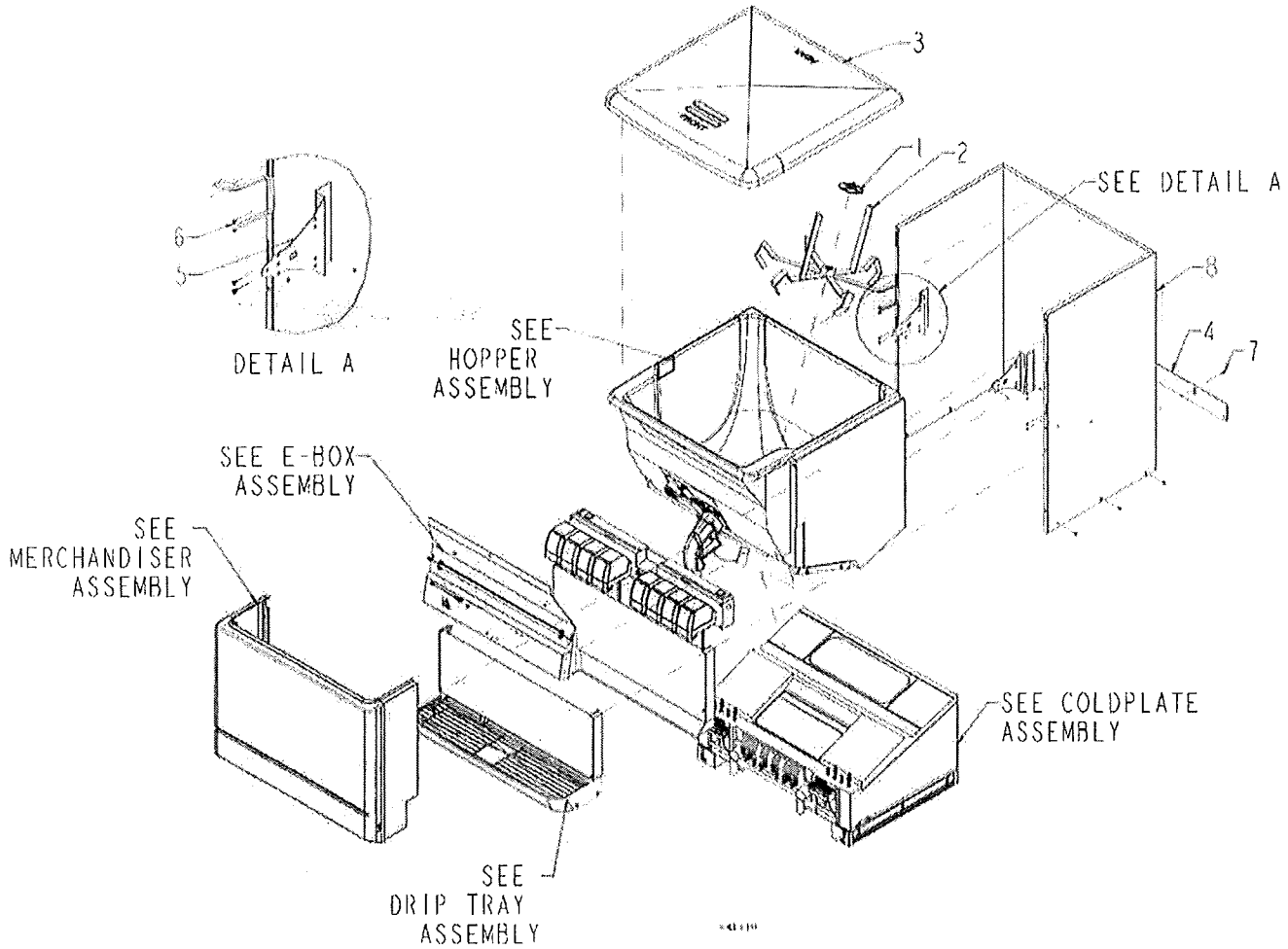
This document contains proprietary information and it may not be reproduced in any way without permission from Cornelius.

This document contains the original instructions for the unit described.

**CORNELIUS INC**  
101 Regency Drive  
Glendale Heights, IL  
Tel: + 1 800-238-3600

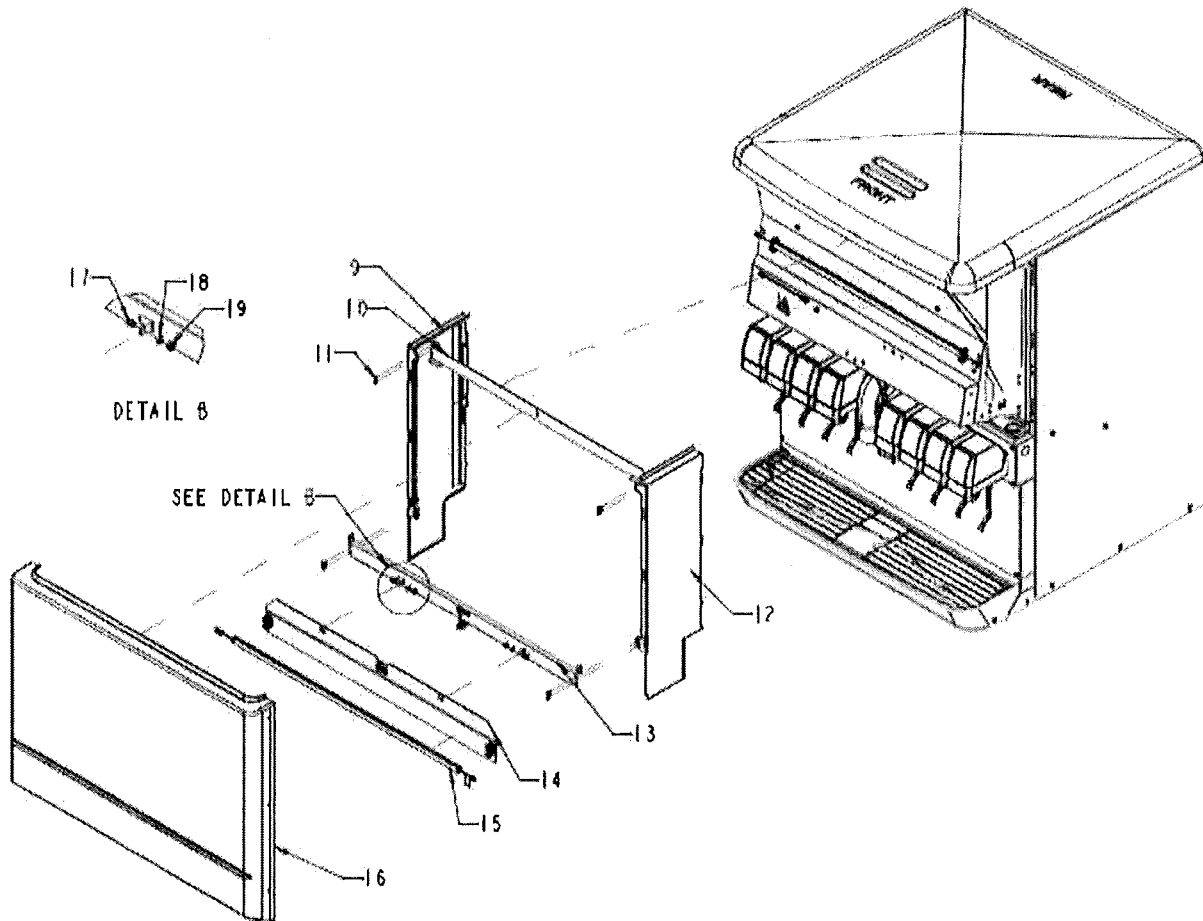
Printed in U.S.A.

## CABINET ASSEMBLY



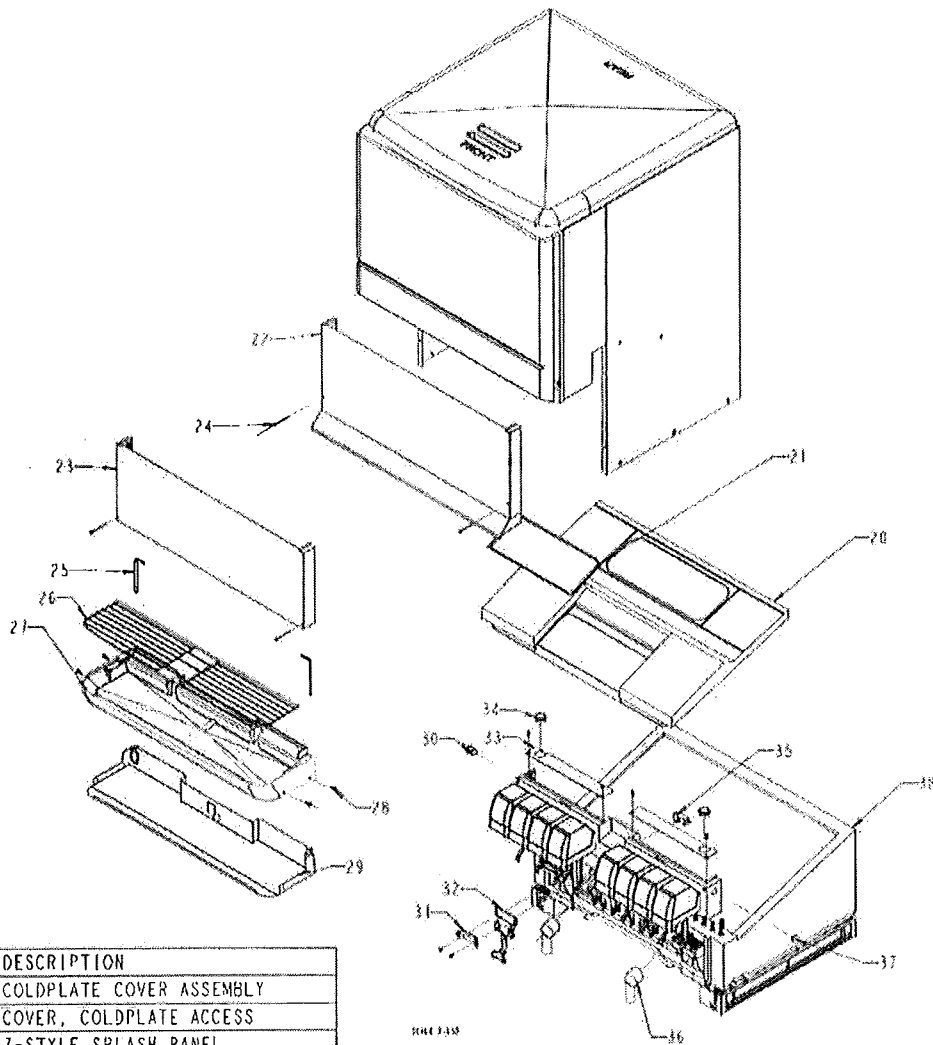
ITEM NO.	PART NO.	DESCRIPTION
1	15087	DISK AGITATOR
2	29694	AGITATOR
3	52897	MANUAL FILL LID
4	29555	COVER, REAR WRAPPER
5	620019701	HINGE GUSSET
6	70320	POP RIVET, 1/8 DIA
7	70171	SCREW MA 08-32
8	29547	CABINET 250

## MERCHANDISER ASSEMBLY



ITEM NO	PART NO.	DESCRIPTION
9	620072148	PANEL ASSEMBLY RH
10	620072152	PANEL CROSS BEAM UPPER
11	70320	POP RIVET .125 ID
12	620072150	PANEL ASSEMBLY LH
13	620072387	PANEL ASSEMBLY CROSS BEAM
14	620072154	PANEL ASSEMBLY REFLECTOR
15	620064030-005	LED TUBE 28" 6W 24VDC
16	620072425	MERCHANDISER ASSEMBLY 8 VALVE
	620072426	MERCHANDISER ASSEMBLY 10 VALVE
17	620047945	SHOULDER SCREW 8-32
18	70051	WASHER
19	630901495	NUT 8-32 THIN NYLON 18-8 SS

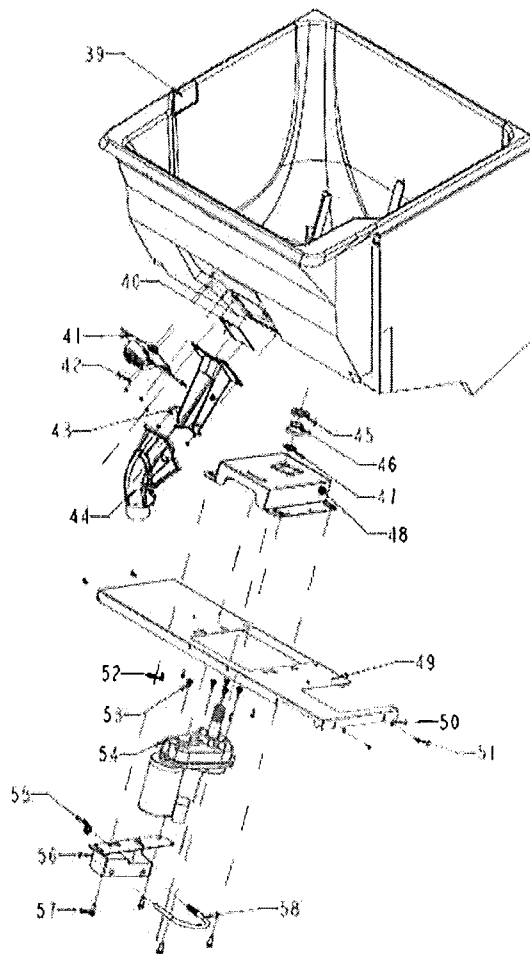
## COLDPLATE AND DRIP TRAY ASSEMBLIES



ITEM NO	PART NO	DESCRIPTION
20	53268	COLDPLATE COVER ASSEMBLY
21	53255	COVER, COLDPLATE ACCESS
22	620052312	Z-STYLE SPLASH PANEL
23	620053401	SPLASH PANEL
24	71006	SCREW MA 08-32
25	10145	PIN DRIP TRAY MOUNTING
26	CONTACT SALES	CUP REST
27	620056253	DRIP-TRAY ED/DF2XX GRAY
28	10478R	CLIP, PUSH-ON
29	620028702	DRIP-TRAY EXT ASY
30	32977	SWITCH KEY DPST
31	27107	RETAINER, ICE DISPENSE LEVER
32	15500	DISPENSE LEVER, SHORT
	15488	DISPENSE LEVER, LONG
	15532	PUSH LEVER ICE DISPENSE
33	15090	BAFFLE UPPER LEFT
34	50459	BUSHING SNAP I 188H 9371D
35	02070	DISPENSE SWITCH KIT (INCLUDES SWITCH, BOOT AND SPACER)
36	53011	FITG- ELBOW C-PLT DRAIN
37	***51908	PLUG BUTN 3/4HOLE DD BLK
38	CONTACT SALES	PANEL/COLDPLATE/VALVE ASSY

\*\*\* FOR 220-240 V MODELS, 51908 PLUG IS REPLACED BY 62303001 PUSH BUTTON SWITCH ACTUATOR AND 620303002 SWITCH BLOCK

# HOPPER ASSEMBLY



SCALE 1/16"

ITEM NO	PART NO	DESCRIPTION
39	620517270R	FOAMED HOPPER ASSEMBLY
40	21491	SLIDE, GATE
41	32954	SOLENOID ASSEMBLY, 120 VOLT
	33409	SOLENOID ASSEMBLY, 220-240 VOLT
42	70016	NUT HEX 10-32 SS NYLOC
43	62050091	ICE CHUTE
44	53168	COVER ICE CHUTE
45	**620061992	GASKET
46	**620061600	MOTOR SHAFT SEAL
47	**620062976	QUAD-RING
48	29541R	PLATE, MOTOR MOUNT
49	620045909	BRKT MTG MOTOR ED2XX
50	70017	NUT HEX 10-32 SS NYLOC
51	70242	SCREW MA 10-32
52	10178	SCREW
53	71028	BOLT SH 1/4-20
54	620314922	AGITATOR MOTOR 120 VOLT
	33404	AGITATOR MOTOR 220-240 VOLT
	620048092	CAPACITOR, 250V 20 mfd
55	150774000	NUT WING 3/8-16 STZ1
56	15137	MOTOR MOUNT 220-240 VOLT
	620052843	MOTOR MOUNT, 120 VOLT
57	71033	BOLT MA 3/8-16 HX
58	71025	STRAP, MOTOR 220-240 VOLT
	620516432	STRAP, MOTOR 120 VOLT

Service PART kit 629088782

\*\* PARTS INCLUDED IN AGITATOR MOTOR KIT

## KIT ICE CHUTE DOUBLE GASKET

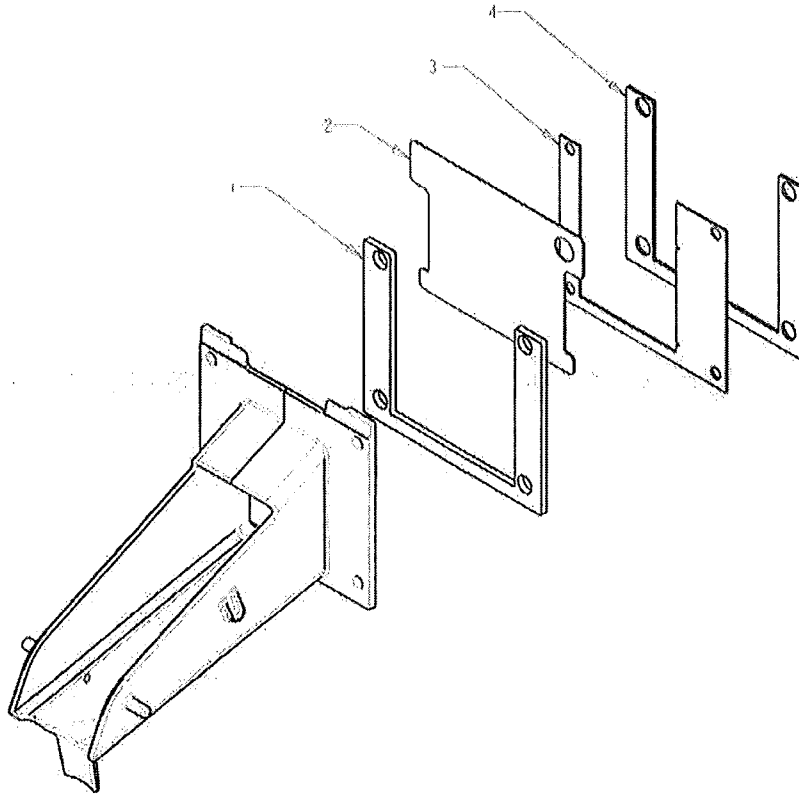


Figure 2

Item No.	Part No.	Name
1	620059717	Gasket Out Gate Outer (Red)
2	620059707	Gate Restrictor
3	620059705	*Deflector Ice Gate
	620059706	*Deflector Ice Gate RH ED300
4	620059718	Gasket Ice Gate Inner (Black)

**NOTE: \* Used on soft ice models only.**

**CAUTION:**  
Tighten #10-32 Nuts to 3.0 IN\* LBS of Torque. Red gasket will deform slightly under load, but should not squeeze out of seal path.

## ELECTRICAL BOX ASSEMBLY - FLUORESCENT LIGHTING

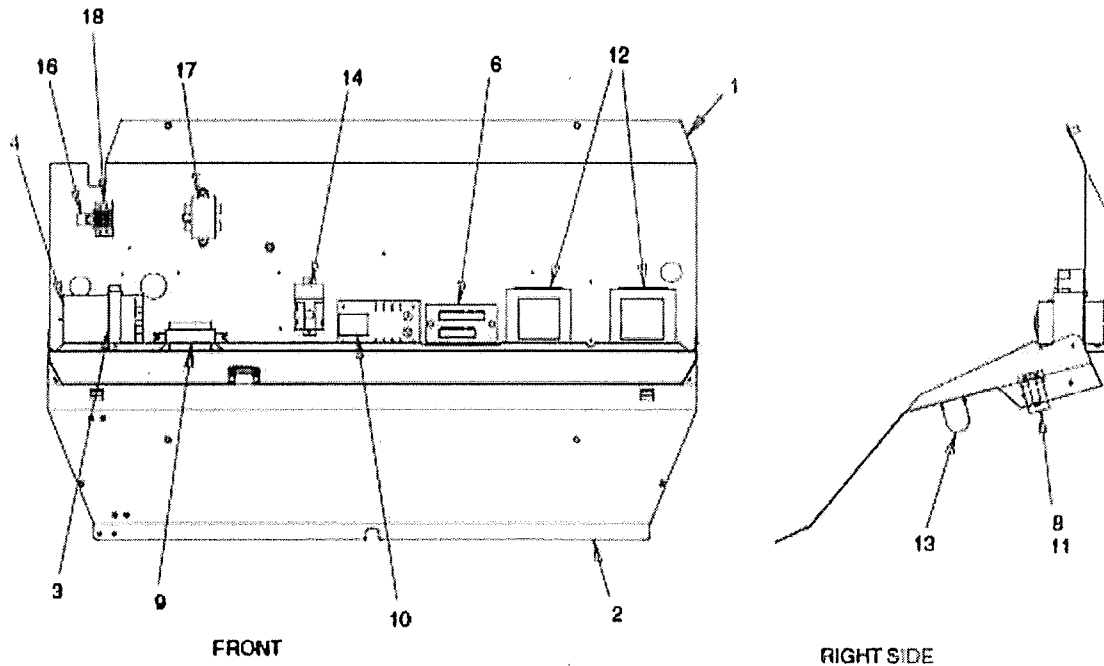


Figure 3

Item No.	Part No.	Description
1	620022001	Electrical Box (ED250)
	620020902	Electrical Box (ED200)
2	620022101	Reflector Panel (ED250)
	620020901	Reflector Panel (ED200)
3	620021101	Clamp, Capacitor, 220-240V
4	33160R	Capacitor, Agitator Motor, 220-240V
5	30995	Power Cord, 120 Volts
	620302901	Power Cord, 220-240 Volts
6	30960	Terminal Board, 120 Volts?
	31107	Terminal Board, 220-240 Volts
7	Not Used	
8	31620	Starter 110 Volt
	620054076	Starter 240 Volt

Item No.	Part No.	Description
9	31621	Ballast, 120 Volt
	33662	Ballast, 220-240 Volt
10	629087448	Agitation Timer Kit, 120 Volts
	629087451	Agitation Timer Kit, 220-240 Volts
11	620302201	Socket, Starter
12	32682	Transformer, 120 Volts
	32829R	Transformer, 220-240 Volts
13	620302101	Lamp-holder
14	620306601	Relay, Start, 220-240 Volts
15	Not Used	
16	620304601	Varistor, 220-240 Volts
17	620307301	Filter, 220-240 Volts
18	32244	Terminal Strip, 220-240 Volts





## ELECTRICAL BOX ASSEMBLY - LED LIGHTING

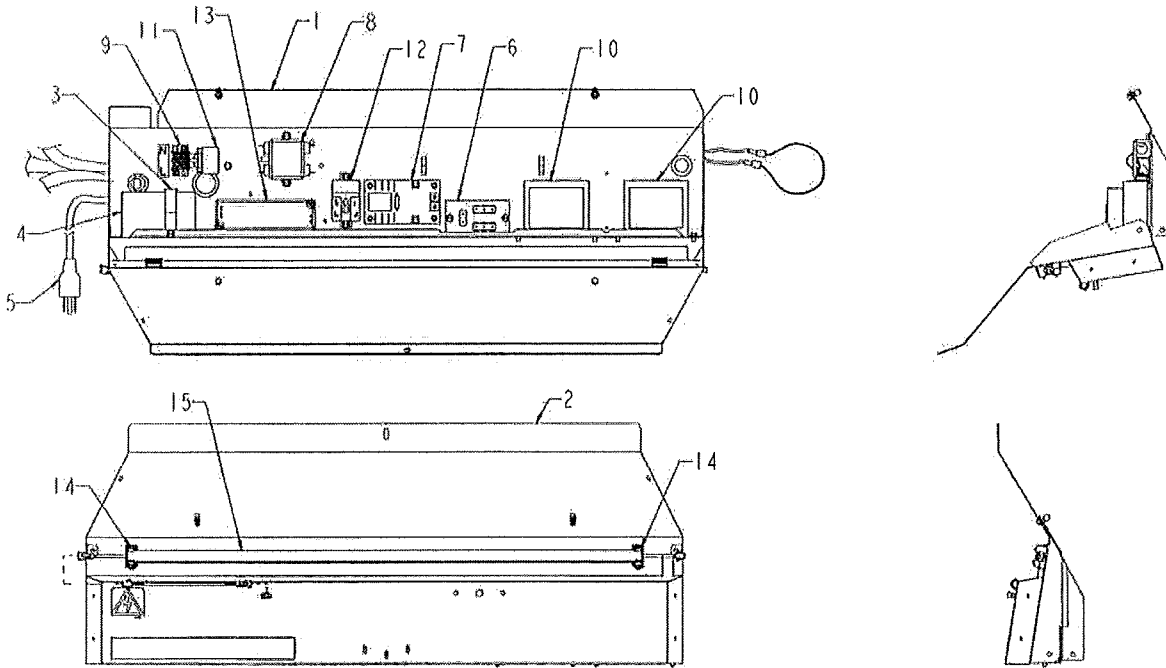


Figure 4

Item No.	Part No.	Description
1	620022001	BOX ELEC ED/DF 250
	620020902	BOX ELEC ED/DF 200
2	620200102	REFLECTOR PANEL ED/DF 200
	620200103	REFLECTOR PANEL ED/DF 250
3	620021101	CLAMP CAPACITOR 220-240 V
4	33160R	CAPACITOR 220 -240 V (AGITATOR MOTOR)
5	30995	POWER CORD, 120V
	620302901	POWER CORD, 220-240 V
6	30960	TERMINAL BLOCK 120V
	31107	TERMINAL BLOCK 220-240V

Item No.	Part No.	Description
7	629087448	AGITATION TIMER KIT, 120V (USE FOR UNITS BUILT AFTER 1/22/02)
	629087444	AGITATION TIMER KIT, 120V (USE FOR UNITS BUILT AFTER 1/23/02)
	629087451	AGITATION TIMER KIT, 220 - 240 V
8	620307301	FILTER, POWER LINE, 220 - 240 V
9	32244	TERMINAL STRIP, 220 -240 V
	32682	TRANSFORMER, 120 V
	32829R	TRANSFORMER, 220 - 240 V
11	620304601	VARISTOR, 220 - 240 V
12	620306601	RELAY, AGITATOR MOTOR 220-240 V
13	620057649-018	PWR-SUPPLY 24VDC 20W LED ASSY
14	620064161	CLIP RETAINING LED LIGHT BAR
15	620064030-001	LIGHT TUBE 24" 10W 24VDC

**SOLENOID ASSEMBLY**

Complete  
Assembly 32954

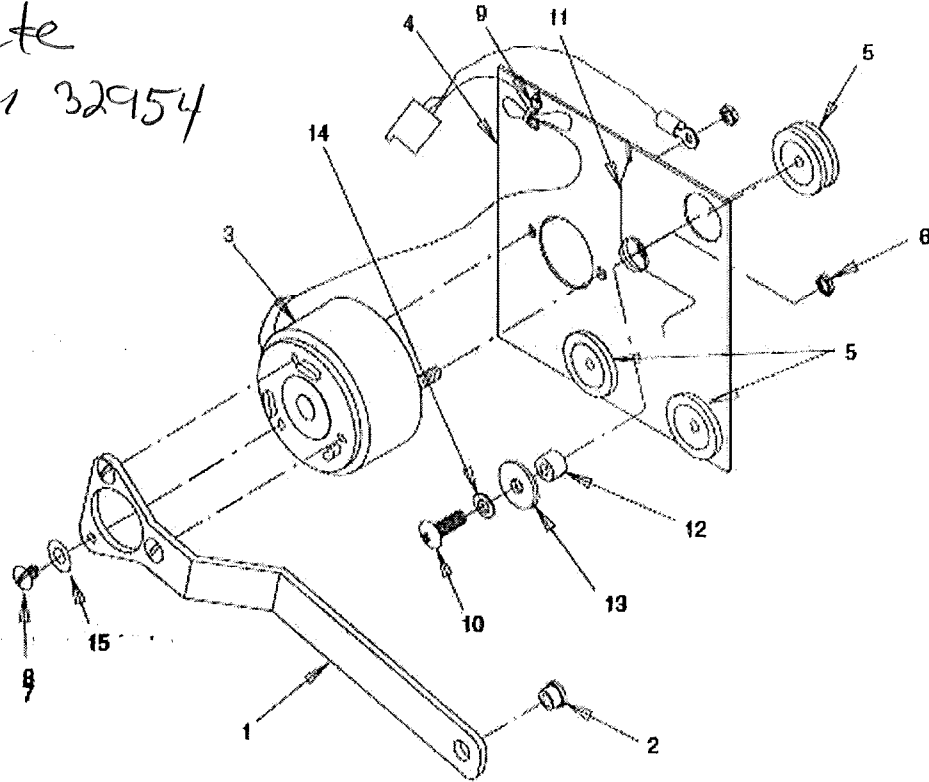


Figure 5

Item No.	Part No.	Description
1	28173	Arm, Gate Lift
2	50754	Bearing, Gate Arm
3	32957	Solenoid, 120 Volts
	33397	Solenoid, 220-240 Volts
4	28172	Plate, Solenoid Mounting
5	50752	Isolator
6	70015	Hex Nut, No. 10-32
7	51689	Locktite
8	70162	Screw, No. 8-32 By 1/4-In. Long

Item No.	Part No.	Description
9	50705	Tie Cable
10	70165	Screw, No. 8-32 By 5/8-In. Long
11	71007	Spring, Solenoid Arm
12	51348	Space
13	70067	Washer, .218 I.D. By .875 O.D.
14	70057	Lockwasher, No. 10
15	70052	Flatwasher, No. 8
*	70485	Gate Slide Spring (Attaches to gate lift arm on Solenoid Assy. Need Qty. 2.)

**NOTE: \* Not Shown**



## DRAIN ASSEMBLY

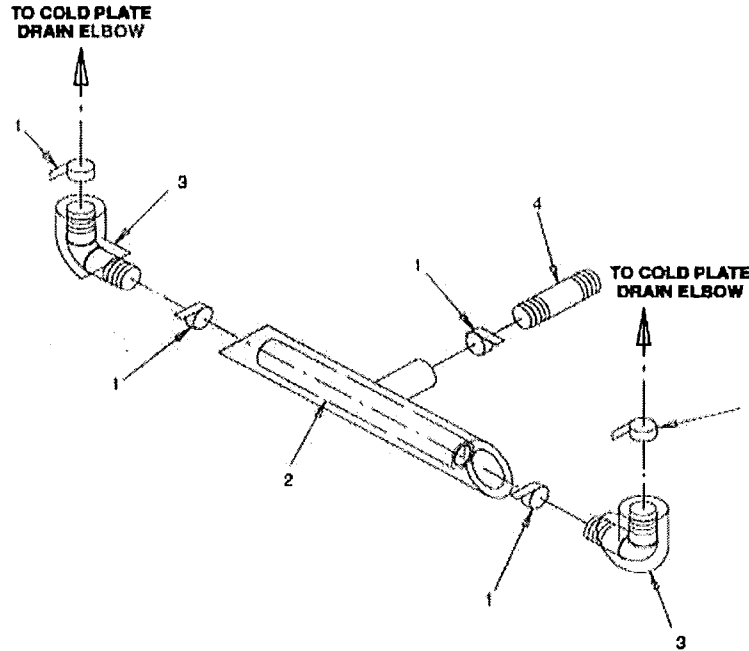


Figure 6

Item No.	Part No.	Description
1	70750	Hose Clamp
2	53169	Drain Tube 1
3	51280	Elbow 2
4	53293	Coupler 1
*	629080104	Kit Sink to Z Style DF200/250 (Z = no drip tray or cup-rest. This kit removes tray and cup rest. Allows unit to sit on counter with built in tray and cup rest.)
*	629080304	Kit Z Style to Sink DF200/250 Gray (Z = no drip tray or cup rest. This kit adds drip try and cup rest to unit.)
*	629080303	Kit Z Style to Sink DF200/250 Black (Z = no drip tray or cup rest. This kit adds drip try and cup rest to unit.)

### COMPONENTS FOR FLAVOR UNITS

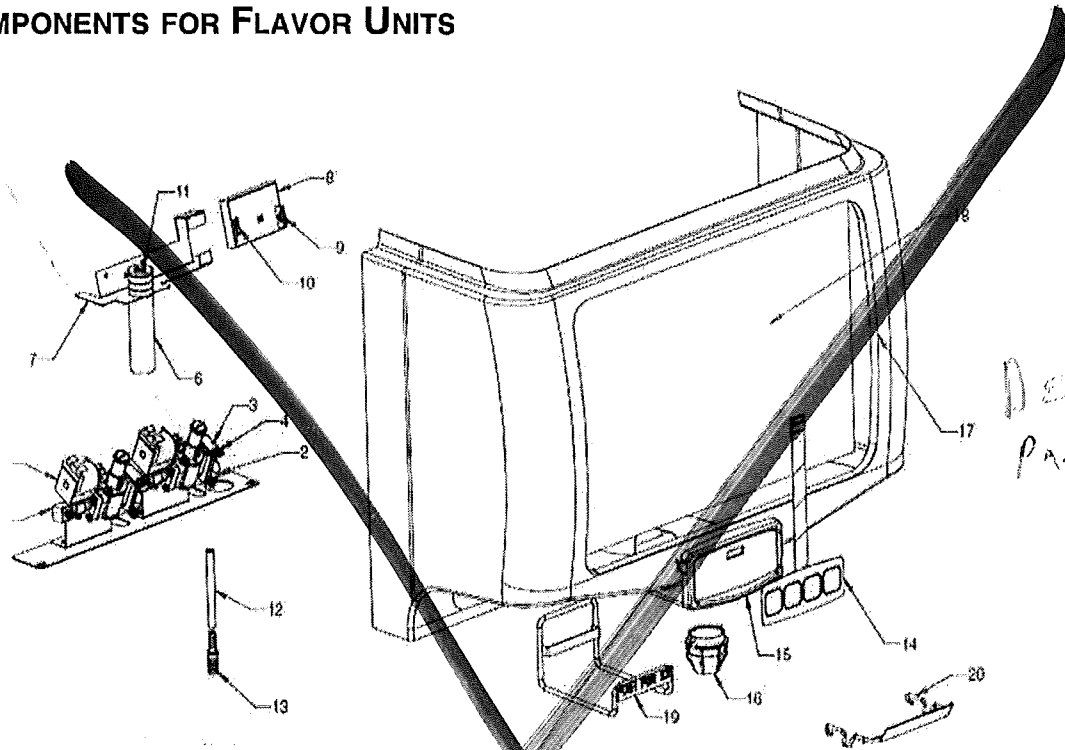


Figure 7

Item No.	Part No.	Description
1	2487	Flow control assembly
2	620709068	Fitting elbow 1/4 barb
3	620046335	Retainer valve
4	319941000	Screw tr 08-32-hxws
5	620718932	Fitting 90 swivel 1/8 barb
6	620715821	Inner nozzle
7	620052042	Nozzle bracket 200/250
8	620314823	PC Board
*9	620313657	Jumper PCB to keypad 4
	620313658	Jumper PCB to keypad 2 fl
*10	620316443	Harness solenoid 4
	620316442	Harness solenoid 2
*11	770000119	Tubing syrup 1/8 id

Item No.	Part No.	Description
12	50299	Tubing bev 265 id x 465 od
13	77040700	Fitg splicer 1/4 x 3/8
14	620313239	Membrane switch 4 button
15	620516527	Housing - keypad/nozzle
16	1945	Outer nozzle
17	620519217	Merch FlavorBlast, ED200 blk
	620519213	Merch FlavorBlast, ED250 blk
	620519214	Merch FlavorBlast, ED250 gry
	620519212	Merch FlavorBlast, ED200 gry
*18	620920066	Graphic FlavorBlast, ED200
	620920067	Graphic FlavorBlast, ED200
19	620709313	Lever Ice Push Bar - FlavorBlast
20	620516221	Splashshield FlavorBlast

NOTE: \* Not Shown

# WATER MANIFOLD ASSEMBLY

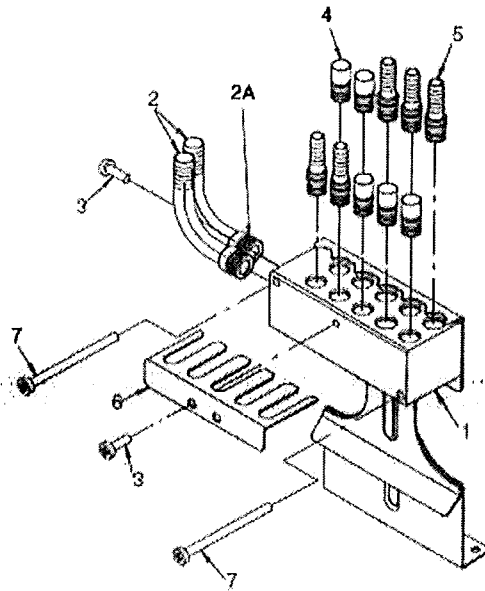


Figure 8

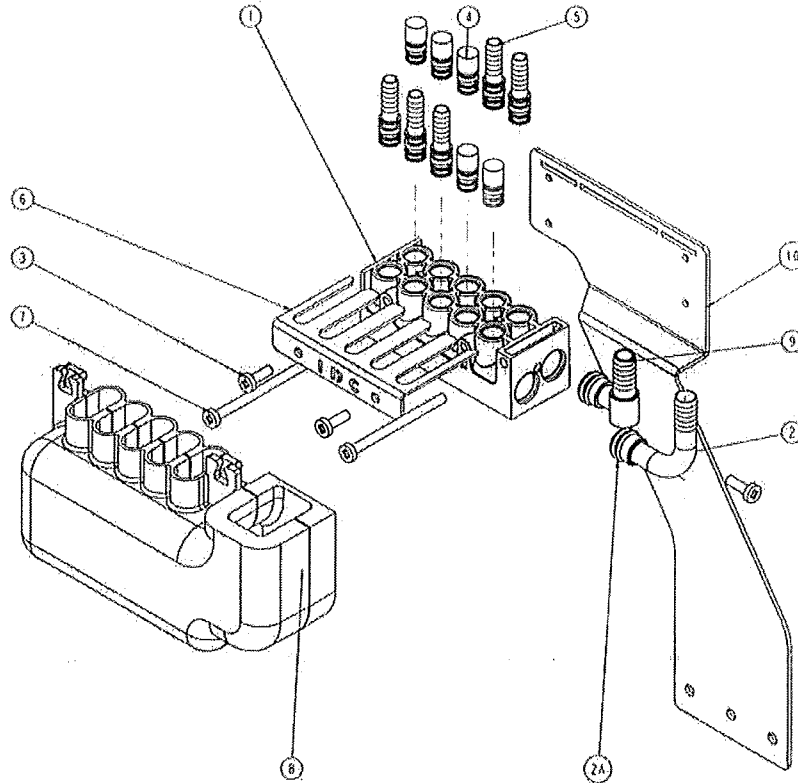
Item No.	Part No.	Description
1	620407726	Manifold Flex
2	620709065	Fitg Elbow 1/2 X 3/8 Brb
2A	100057	O-ring
3	70204	Screw Sm #8 X 1/2
4	620519005	Plug 3/8 w/O-ring
5	620709066	Fitg Straight 3/8 X 1/4 Brb
6	620046316	Retainer Clip
7	620706632	Screw TRPH #8-18 X 2 Waxed
*	620711913	Insulation Block, RH
*	620711914	Insulation Block, LH
*	620715408	Hook and Loop Fastener

620407728

NOTE: \* Not Shown

Lube 321471000

### WATER MANIFOLD ASSEMBLY (SKU P/N 0511812Q1544)



620407728

Item No.	Part No.	Description
1	620407726	Manifold Flex
2	620709065	Fitg Elbow 1/2 X 3/8 Brb
2A	100057	O-ring
3	70204	Screw Sm #8 X 1/2
4	620519005	Plug 3/8 w/O-ring
5	620709066	Fitg Straight 3/8 X 1/4 Brb
6	620046316	Retainer Clip

Item No.	Part No.	Description
7	630901579	Screw MA 08-32PAPH 56 SS
8	620711913	Insulation Block, RH
	620711914	Insulation Block, LH
9	770000534	Fitg L-Brb 3/8Brb X 1/2Dole SS
10	620064700	Brkt-RH-Manifold MTG ED Series
	620062667	Brkt-LH-Manifold MTG ED Series
*	620715408	Hook and Loop Fastener

\* Lube 32/471000

**Cornelius Inc.**  
**[www.cornelius.com](http://www.cornelius.com)**

