



3023 10 VALVE POST-MIX DROP-IN DISPENSER



UFB portion control valves shown

FEATURES

Quality - Built-in cold carbonator produces bottle quality drinks every time

Low maintenance - No seasonal CO₂ adjustments required for changes in water temperature

Install - A complete system for simplified installation

Efficient - Reduces service frequency and lowers equipment life cost

Profitable - Generates increased beverage sales and greater consumer satisfaction

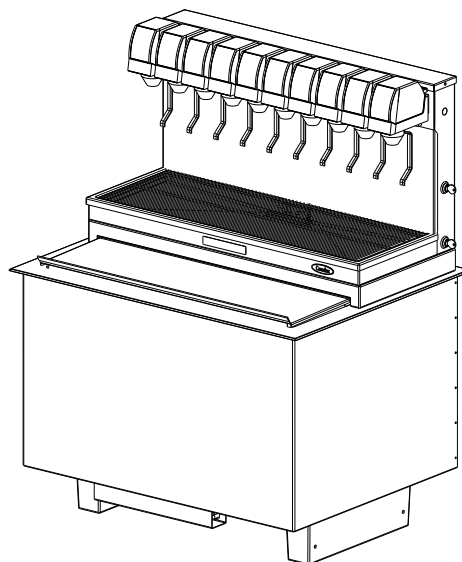
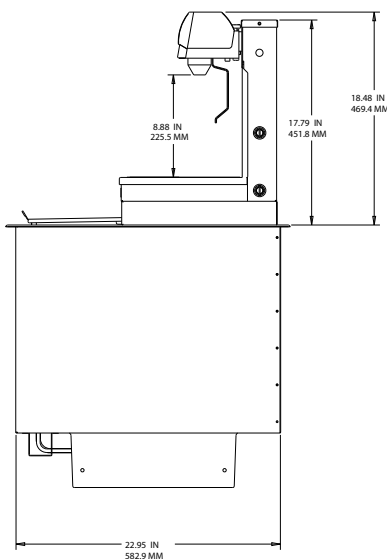
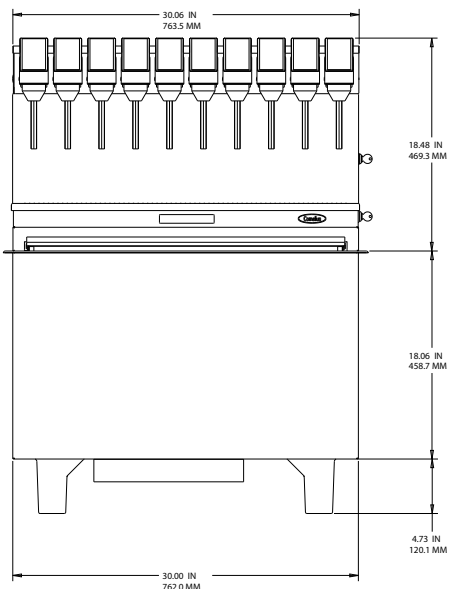
Accommodating - 30" wide stainless steel tower with extended drip tray

Accessibility - Electric lid switch with sliding lid

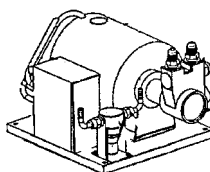
Flexibility - 5-2-1-1-1 flexible cold plate manifolding

Environmentally Responsible - Non-CFC urethane foamed insulation






**NOTE: PUMP & MOTOR ASSEMBLY
MUST BE POSITIONED WITHIN
8 FEET OF THE DISPENSER**



PART NUMBER	DESCRIPTION
6311001045863	3023 IntelliCarb Drop-In Dispenser with 10 UFB-1™ 2-4 oz Sanitary Lever valves
6311001055590	3023 IntelliCarb Drop-In Dispenser with 10 UFB-1™ 2-4 oz OptiFill valves
6311001065589	3023 IntelliCarb Drop-In Dispenser with 10 UFB-1™ 2-4 oz Portion Control valves

TECHNICAL SPECIFICATIONS

TYPE OF VALVES UFB-1™ post-mix
 NUMBER OF VALVES 10
 BEVERAGE MANIFOLDING 5-2-1-1 (right to left)
 2 positions ambient
 CUP CLEARANCE 9.75" (248 mm)
 ICE STORAGE CAPACITY 130 lb
 CONNECTIONS Water: 0.375" (9.5 mm)
 barb fitting
 Syrup: 0.375" (9.5 mm)
 barb fitting

COUNTER TOP CUT OUT 30.25" x 23.25"
 (768 mm x 591 mm)
 DRAIN SIZE 0.75" (19.1 mm)
 flexible hose
 ELECTRICAL REQUIREMENTS . . 120 V / 60 Hz / 1.5 Amps
 SHIPPING WEIGHT 335 lb
 AGENCY LISTINGS 
 Transformer is UL and
 cUL listed

Pepsi and IntelliCarb are registered trademarks of Pepsi Co, Inc.

